

LCOG

LANE COUNCIL OF GOVERNMENTS



WORKING
TOGETHER

2005



What is a COG? Serving as regional planning, coordination, program development and service delivery organizations, councils of governments (COGs) have, for years, addressed the needs of thousands of local communities across the nation. COGs are typically voluntary associations of cities, counties, and special purpose districts within a region. Councils of governments differ in size and range of activities from one region to another, but their common purpose and function is solving area-wide problems. Their support by elected officials is evidence of recognition that “local” issues often cross jurisdictional boundaries and can be most effectively addressed by communities working together within a regional forum.

A second and equally important purpose of COGs is efficiency. Through the pooling of resources, a number of governmental units can accomplish more than they could individually.

LCOG Means Working Together In Lane County, Oregon, the advantages of cooperation and joint ventures between local governments were recognized in the mid-1940s. Since then, Lane Council of Governments (LCOG) has served the jurisdictions in this community.

LCOG has no taxing or ordinance authority. Rather, it conducts its work under the policy guidance of a Board of Directors made up of local elected officials and in cooperation with agencies at the local, state, and federal levels.

Flexible and Responsive Under Oregon law and intergovernmental agreement, the elected officials of Lane County have been able to shape LCOG in a manner that has best served the public’s interest. An executive director and a professional staff represent a shared resource for performing Work Program tasks annually specified by the Board of Directors.

LCOG Financing The financial support for the conduct of LCOG’s work tasks is provided through annual dues paid by member agencies, charges for special services, and by specific, project-oriented federal and state grants.

The member dues component of LCOG’s revenue totals only a fraction of the overall budget. However, the payment of annually adopted dues by units of local government in Lane County provides for services to all members and the “leverage” by which LCOG has been able to tap state and federal resources.

LCOG'S SERVICES

- Senior & Disabled Services
- Technology Services
- Planning Services
- Administrative Services

SENIOR & DISABLED SERVICES

LCOG's Senior & Disabled Services (S&DS) is responsible for planning and administering programs and services for people with disabilities and the elderly in Lane County. Services are financed by contributions from participants, donations from private citizens, local businesses and service organizations, and by local, state, and federal government funds. In the past years, S&DS has assisted the regional community in the following areas:

Senior Connections Senior Connections provides a type of grass-roots help for seniors. By scouring the community for resources and volunteers that might solve community problems, the Senior Connections workers become one of the best sources to turn to for help. Services are available to seniors at no cost.



Senior Meals Program Good nutrition is important for everyone, especially seniors. The Dining Center and Meals on Wheels programs offer opportunities for seniors in Lane County to receive healthy, well-balanced meals.

Home and Community Care When an adult with a disability or an elderly person requires assistance with the tasks of daily living, they may be cared for in a variety of settings. A case manager will establish and monitor a client's care plan with involvement from the client and family members. The case manager also monitors the care the client receives in his or her own residence or in a licensed care facility.

Medical and Financial Services Senior & Disabled Services provides seniors and low-income adults with disabilities with a variety of financial and medical assistance information and resources.

Special Transportation and Transportation Assistance Senior & Disabled Services (S&DS) and Lane Transit District (LTD) offer a variety of ways to help people with special needs obtain transportation. The agency may be able to provide low-cost or free transportation for its clients (primarily medically-related transportation).

Protective Services, Reporting Abuse or Neglect In response to complaints from the public, care facilities, and law enforcement; staff take steps to remove a person from a harmful setting or stabilize the situation by providing supportive services. Investigations involve persons who live in their own homes, adult foster homes, assisted living facilities, residential care facilities, and nursing homes.

Nursing Home Placement and Care Senior and Disabled Services Division inspects and monitors nursing home facilities for compliance with State and Federal regulations. Clients are screened before entering a nursing facility to assure that the facility matches the level of care that the client needs. Nursing homes provide skilled care, rehabilitation, and end-of-life care on a 24-hour basis.

TECHNOLOGY SERVICES

LCOG's Technology Services provides cost-effective technology services to participating agencies. Funded through agreements with the agencies that receive the services, staff assists with regional telecommunications management and operation, regional information systems planning and coordination, Metro Television, and the Regional Land Information Database (RLID).

Regional GIS/RLID The Regional Land Information Database is the county-wide collection of commonly-used land record data and geographic information. The database integrates the information about land created by various local governments and adds the ability to represent all of the data on maps. The result is a very powerful data collection that is used for many government and business functions. It replaces several independent applications of various departments and agencies to provide access to land information, such as property assessments, zoning, and addresses.

The database can be accessed by any authorized user via the Internet.

Telecommunications LCOG staff coordinates cost-effective telephone services for many public agencies. The LCOG telecommunications consortium operation represents the largest Oregon telephone company customer outside of Portland. Services include system administration, maintenance contract administration, voice mail applications, and procurement of carrier services.

Regional Technology Coordination Coordination of the multi-agency Regional Technology Partnership is provided by LCOG's Technology Services Coordinator. Agency personnel assist in the development and implementation of plans and programs for enhanced use of information and communications technologies.

Metro TV LCOG provides staff support to Metro Television, an in-house video production center that provides services for agencies and jurisdictions. This shared resource uses broadcast-quality equipment to produce videotapes designed to educate citizens and elected officials, and to enhance public sector employees' efficiency. Under agreements with the City of Eugene and Lane County, Metro TV operates the government channel on the Metropolitan Cable System and coordinates the public and educational channels.

Telecommunications Franchise and Telecommunications Fiber

LCOG staff works to improve services and increase the understanding of the potential role of telecommunications in Lane County. More specifically, LCOG staff supports the Regional Fiber and Fiber South Consortia.



Information Research & Analysis The Information, Research and Analysis (IRA) program provides applied Geographic Information Systems (GIS) products and services as well as advanced research and data analysis support. IRA staff apply specialized knowledge of regional data and advanced tools including GIS, databases, and analytical models to support visualization and understanding of environmental, social, demographic, and spatial issues.

Public Infrastructure Finance LCOG provides services to its members to assist them in establishing System Development Charges (SDCs) and other infrastructure charge rates. Services

can be limited to technical analysis only, or a complete package up to and including development of necessary master plans for transportation, storm drainage, water, sanitary sewers, and parks.

Emergency Communications LCOG serves as the 9-1-1 coordinator for Lane County, managing state 9-1-1 funding and coordinating the activities of the four Public Safety Answering Points (PSAPs). LCOG also provides the underlying information in the Master Street Address Guide (MSAG) which allows for proper routing of 9-1-1 calls. LCOG can also provide assistance in communications planning and coordination.

Modeling LCOG provides technical modeling services to assist in regional and local transportation planning. Recognized for its modeling expertise, LCOG has also developed non-traditional models to assist decision makers in other fields, including public safety.

PLANNING SERVICES

Lane Council of Governments employs a professional staff to help individual communities and the region by identify efficient solutions to community-development issues and ensure compliance with state and federal requirements. LCOG's Planning Services include the following:

Metro Planning The Metro Plan planning process is an inter-jurisdictional effort among the Cities of Eugene, Springfield and Lane County. LCOG maintains the Metro Plan and related metropolitan planning documents, and provides coordination, technical assistance and project management of special studies and the metropolitan Periodic Review process.

Current Planning Current planning services include support to planning commissions and city councils in processing land use applications. This includes researching applications, writing staff reports, sending referrals to interested agencies and notices to property owners, creating findings of fact, and drafting final orders.

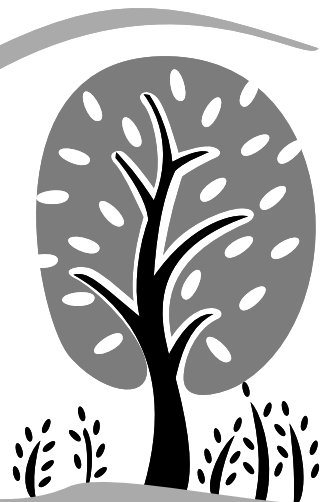
Creative Services The Creative Services team designs and reproduces a wide variety of high-quality graphic material for federal, state, and local agencies, member agencies, LCOG staff, and other clients. Some of these services include graphic design, presentation and outreach materials, website development, site planning and cartography.

Transportation Since the late 1960s, LCOG has participated in the planning and development of the Eugene-Springfield transportation system. As the designated Metropolitan Planning Organization for the Central Lane metropolitan area, LCOG is responsible for preparation of the regional transportation plan. This responsibility includes providing technical modeling of the transportation system to local governments; facilitating the interaction of federal, state, and local agencies dealing with transportation issues; managing the analysis and process for maintaining conformity with federal air quality standards; preparation of financial analysis and project programming; and providing opportunities for public involvement.

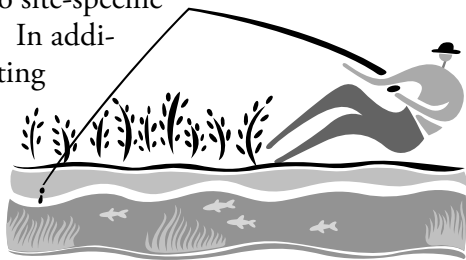
Region 2050 Region 2050 is a voluntary, collaborative regional planning effort to improve and sustain quality of life in the Southern Willamette Valley over the next 50 years. Region 2050 began in the summer of 1999 with the adoption of formal resolutions by the Lane County Board of Commissioners and the City Councils of Coburg, Cottage Grove, Creswell, Eugene, Junction City, Lowell, Oakridge, Springfield, Veneta, and Westfir. The resolutions endorsed the concept of developing a Regional Growth Management Strategy and defined the forum for the dialogue among the regional partners.

Boundary Commission The Boundary Commission is a State agency that reviews certain types of local government boundary changes. Its members are appointed by the Governor. In Lane County, the Commission has decision-making authority for annexations to or withdrawals from cities or districts, and transfers of territory from one city to another city or one district to another district. In addition, mergers, consolidations, formations, and dissolution of cities or districts are within the decision-making authority of the Commission. Requests to extend water or wastewater lines outside the corporate boundaries of a city or district are also acted on by the Commission.

Natural Resources LCOG's natural resources staff expertise allows for assistance in all areas of natural, environmental and water resource planning and management. With a wide range of experience and knowledge, LCOG can help clients fill nearly any environmental resource need.



Parks and Open Space LCOG provides park and open space planning and design services for member agencies ranging from the development of master plans for cities and districts to site-specific design for natural and developed areas. In addition, LCOG often serves as a coordinating body for park and open space projects of a regional nature.



Water Resources LCOG staff provides assistance in all areas of water planning and management: drinking water, stormwater, wastewater, watershed assessment and management.

Community Safety LCOG's Community Safety Program provides resource development, facilitation and planning services, and research and evaluation to the police, courts, schools, corrections, prosecution, juvenile justice, prevention services, fire, and emergency services.

Resource Development The Resource Development Program provides grant and contract development services to LCOG's member agencies, S&DS, Planning and Regional Technical Services. Tasks include grant and contract identification, procurement, and administration.

Legal Services LCOG has provided its member agencies with hearings officials and other legal services since 1982. These services include deciding quasi-judicial land use applications and adjudicating administrative law cases, including civil infractions, the formation and assessment of local improvement districts, and animal regulation citations.

Loan Program LCOG's Small Business Finance Program stimulates economic development throughout Lane County by helping small businesses to take advantage of the many federal, state and local government loan programs. Available loan programs include the U.S. Small Business Administration, U.S. Economic Development Administration, USDA Rural Business Services and the State of Oregon.



Economic Development The LCOG Economic Development Program provides various forms of assistance to local governments and businesses with community development, economic analyses, project implementation, and planning.

Facilitation Services The Facilitation Services Program offers facilitation and strategic planning services to public agencies and non-profit organizations in and outside Lane County, Oregon. Services are custom-designed to meet client specifications.

ADMINISTRATIVE SERVICES

LCOG's Administrative Services provides traditional management functions necessary for the efficient operation of the organization. In addition, staff provides services such as reception, mailing functions, agency vehicles, facilities and support for the LCOG Board, Executive Committee, MPC and other meetings.

Fiscal
Human Resources
Information Services
LCOG Facilities

Website information Detailed information on many of the programs and projects mentioned in this report can be found on the Lane Council of Governments' website at www.lcog.org. The site offers complete publications for download, meeting schedules and agendas, links to member agencies, and current news of record. LCOG also maintains informative websites for its Senior & Disabled Services Division at www.sdslane.org, the Regional Land Information Database (RLID) at www.rlid.org, and the Lane Regional Information Center at www.laneinfo.com.

Sites designed and maintained by LCOG:

Lane Council of Governments
www.lcog.org

Keep Us Moving
www.KeepUsMoving.info

Senior & Disabled Services
www.sdslane.org

Metro Television
www.metrotv.org

Regional Land
Information Database (RLID)
www.rlid.org

Metro Waterways
www.metrowaterways.org

Lane Regional Information Center
www.laneinfo.com

Oregon Telecommunications
Coordinating Council (ORTCC)
www.ortcc.org

City of Creswell
www.ci.creswell.or.us

Region 2050
www.region2050.org

City of Veneta
www.ci.veneta.or.us

Member Governments

LANE COUNTY

CITY OF EUGENE

CITY OF SPRINGFIELD

CITY OF COTTAGE GROVE

CITY OF FLORENCE

CITY OF JUNCTION CITY

CITY OF OAKRIDGE

CITY OF VENETA

CITY OF CRESWELL

CITY OF DUNES CITY

CITY OF LOWELL

CITY OF COBURG

CITY OF WESTFIR

SCHOOL DISTRICT 4J

SCHOOL DISTRICT 19

SCHOOL DISTRICT 52

SCHOOL DISTRICT 68

LANE COMMUNITY COLLEGE

EUGENE WATER & ELECTRIC BOARD

EMERALD PEOPLE'S UTILITY DISTRICT

PORT OF SIUSLAW

LANE EDUCATION SERVICE DISTRICT

WESTERN LANE AMBULANCE DISTRICT

WILLAMALANE PARK & RECREATION DISTRICT

FERN RIDGE LIBRARY DISTRICT

LANE LIBRARY DISTRICT

SIUSLAW PUBLIC LIBRARY DISTRICT





WORKING TOGETHER
2005

99 EAST BROADWAY, SUITE 400
EUGENE, OREGON 97401-3111
(541) 682-4283
WWW.LCOG.ORG

