



FROM THE DIRECTOR

Congratulations, LCOG! Lane Council of Governments celebrated its 60th anniversary in 2005. The occasion was noteworthy, not as a reflection of “staying power,” but as testimony to the wisdom and far-sightedness of civic leaders who in the mid-1940s predicted a new era for the Willamette Valley, driven by rapid post-war growth. They understood the region’s need for jobs, public works investments and a concerted approach by units of local government. Public sector institutions had a shared need—a need for coordination and planning.

Since its formation in 1945, the agency has worked to enhance the quality of life for the people of this remarkable region and it has established a solid reputation for facilitating good government through cooperation. As illustrated in this report, we have pursued that objective on a variety of fronts during the past year. But, while LCOG’s work program is diverse and contemporary, the fundamental principles that guided the thinking of that group of civic leaders so long ago remain our benchmarks today. LCOG is a voluntary association, dedicated to efficient and effective public service.

In 1945, six public agencies combined forces to establish the Central Lane County Planning Commission. The name was changed in 1961 to Central Lane Planning Council and in 1970 to Lane Council of Governments. The LCOG of today is comprised of twenty-seven member jurisdictions. Those member/owner governments participate in guiding the agency through a Board of Directors of elected officials. Under the leadership of LCOG’s Board Chair, Mayor Gary Williams of Cottage Grove, a six-member Executive Committee and active advisory councils, the organization’s energies have been focused on key issues and valuable intergovernmental services.

As Executive Director, I commend this report to you. Along with an extremely talented and dedicated professional staff, I offer my sincere appreciation to the people and organizations that have contributed to making LCOG’s 60th year a very positive one indeed. But we will not rest on our laurels. Much remains to be accomplished, and Lane Council of Governments will continue to support and enable the well being of this region.

George Kloepfel
Executive Director

LANE COUNCIL OF GOVERNMENTS

Lane Council of Government’s 27 member governments and agencies:

- City of Coburg
- City of Cottage Grove
- City of Creswell
- City of Dunes City
- City of Eugene
- City of Florence
- City of Junction City
- City of Lowell
- City of Oakridge
- City of Springfield
- City of Veneta
- City of Westfir
- Emerald People’s Utility District
- Eugene Water & Electric Board
- Fern Ridge Library District
- Lane Community College
- Lane County
- Lane Education Service District
- Lane Library District
- Port of Siuslaw
- School District 19
- School District 4J
- School District 52
- School District 68
- Siuslaw Public Library District
- Western Lane Ambulance District
- Willamalane Park & Recreation District

99 East Broadway, Suite 400
Eugene, Oregon 97401
(541) 682-4283

www.lcog.org

Lane Council of Governments
2005



2005



www.lcog.org

ON THE WEB

For publications, meeting schedules and agendas, links to member agencies, and current news, please visit the Lane Council of Governments’ website at www.lcog.org.

Also visit the Senior & Disabled Services Division at www.sdslane.org, the Regional Land Information Database (RLID) at www.rlid.org, and the Lane Regional Information Center at www.laneinfo.com. These are just a few of the sites designed and maintained by LCOG.



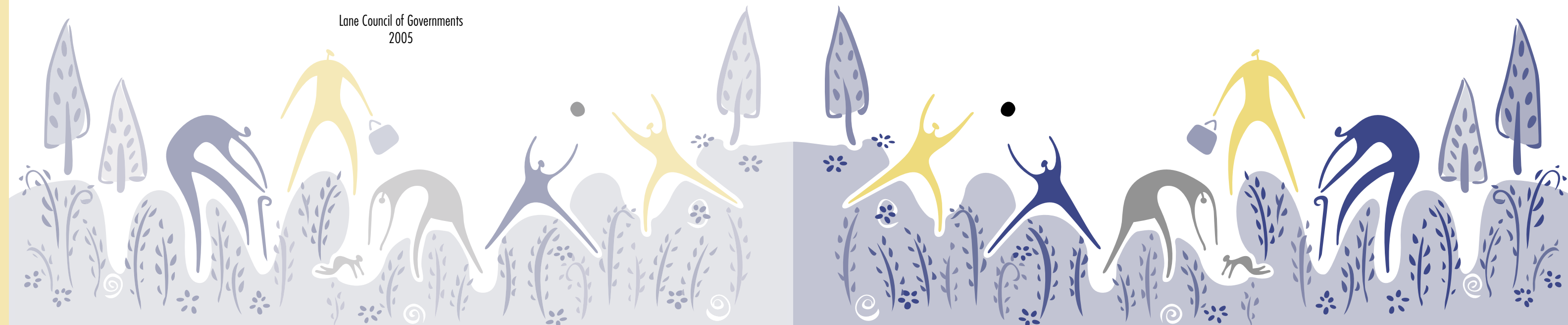
www.sdslane.org



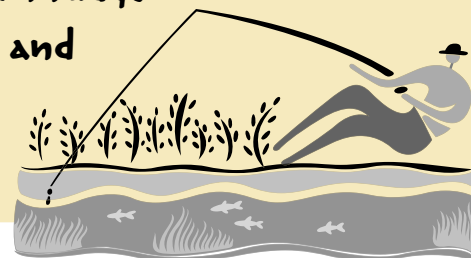
www.rlid.org

MORE ONLINE RESOURCES

- www.Region2050.org
- www.metroTV.org
- www.ruralfiber.net
- www.swrc-oregon.org
- www.metrowaterways.org
- www.lcog.org/wewresearch



“The City of Veneta was a recipient of many of the services offered by LCOG. Our request for services included an update for the Fern Ridge Area Map and Street Guide. The new brochure was utilized by the City and the Fern Ridge Chamber to respond to visitor requests for area information and for individuals seeking relocation information. Thank you LCOG.” -Ric Ingham, City Administrator, City of Veneta



PLANNING SERVICES

REGION 2050

Region 2050's Policy Advisory Board and Technical Advisory Committee completed public outreach efforts for input on alternative growth scenarios for the Southern Willamette Valley region. A seven-month long public outreach process, *Design Your Future*, provided over 300,000 residents with an opportunity to comment on the alternative scenarios. Over 1,000 people participated to build consensus on a vision of how communities will grow. This vision will be used to prepare a Preferred Growth Concept. Region 2050 is managed by LCOG and funded by local governments and utilities, the Oregon Transportation and Growth Management Program, the Oregon Department of Land Conservation and Development, and the Environmental Protection Agency.

NATURAL RESOURCES

LCOG continues to provide planning assistance to the City of Eugene's storm-water quality program, including GIS analysis and mapping, and to the City of Springfield for the Springfield Mill Race Aquatic Ecosystem Restoration Project. LCOG provides assistance to the City of Eugene annual federal priorities program, also known as the United Front. LCOG provided support for quarterly meetings of the newly-convened Natural Resources Subcommittee of the Regional GIS Steering Committee.

TRANSPORTATION

LCOG Transportation staff assisted the Metropolitan Planning Committee (MPC) in appointing a Citizen Advisory Committee for the Metropolitan Planning Organization (MPO) which meets monthly. Staff continued to facilitate public outreach and evaluation for the I-105 Improvement Project, which included implementation of keepusmoving.org. This website uses a variety of techniques and regional partnerships to inform the community about transportation planning and construction. Staff also studied Alternative Mobility Standards for state roads in the MPO area to examine congestion today and in 20 years.

RESOURCE DEVELOPMENT

LCOG's Resource Development team successfully acquired more than \$6.7 million for the region over the last year; including more than \$673,000 for children and youth, \$1.7 million for healthcare access, \$3.8 million for community safety, and \$541,000 for natural resources and community development projects and programs. Staff also provided assistance to LCOG members in project and budget development, capacity building, and grant research.

WATER RESOURCES

Work continues in the Southern Willamette Valley Groundwater Management Area, a multi-jurisdiction project to address nitrate and other potential contamination in groundwater in the Southern Willamette Valley. Total maximum daily load (TMDL) planning coordination of nine jurisdictions has started this year and will continue to move forward. LCOG is working with the state Coastal Management Program to initiate a voluntary on-site wastewater inspection and maintenance program. LCOG also provides planning services to coastal communities. LCOG continues to provide planning and mapping assistance to the Metro Waterways Study, a joint effort among the cities of Eugene and Springfield, Lane County, and the U.S. Army Corps of Engineers.

PARKS AND OPEN SPACE

LCOG completed Parks and Open Space Master Plans for the cities of Coburg and Creswell. These plans illustrate a long-range vision for each community and identify specific parks and open space needs based on existing levels of service and projected growth. LCOG provided mapping and technical assistance for the City of Eugene's Park, Recreation, and Open Space Comprehensive Plan and developed a master plan for the Delta Ponds area.

METRO PLANNING

LCOG staff completed an inventory and analysis of Willamette River Greenway permits in the metro area while supporting collaborative planning efforts in the region on a multitude of projects ranging from wastewater to natural resources. LCOG provides assistance to the planning directors of Eugene, Springfield and Lane County.

ECONOMIC DEVELOPMENT

LCOG approved 32 loans for small businesses in Lane County in the last year, which helped create or save an estimated 250 jobs. Staff also made numerous outreach efforts to local banks, CPA firms, realtors, and chambers of commerce which resulted in a greater awareness and an increased utilization of LCOG's various business loan programs. LCOG assisted in the facilitation role of the Regional Investment Board, the Cascades West Economic Development District and the Lane Economic Committee. These three groups establish strategy, prioritize and find funding for critical economic development projects.

TECHNOLOGY SERVICES

INFORMATION, RESEARCH AND ANALYSIS

LCOG creates and maintains census, demographic, employment, land use, natural resource, and transportation data. Census data was used to compile a demographic summary of the Parent Helpline participants by zip code to evaluate and target services. Several public and private organizations utilized LCOG assistance and census data for the development of grant and business proposals. Two buildable lands analyses were completed for local jurisdictions using LCOG data and expertise. LCOG survey tools and results assisted Mapleton in applying for and receiving a \$1 million grant for wastewater treatment facility upgrades.

REGIONAL GIS (RLID)

The Regional Lane Information Database (RLID) program activities focused on working with LCOG's regional partner agencies toward a major migration to the new ArcGIS software and database environment. The RLID program is preparing for the adoption of a new, more accurate, county-wide tax lot spatial database. Significant improvements were made to the new county-wide road centerline file used by Lane County emergency responders. The RLID website was improved with new data content and overall system enhancements.

APPLIED GIS SERVICES

LCOG's Applied GIS Services program filled hundreds of government agency and public requests for standard and custom maps, mailing lists, spatial analyses and reporting. Database and application development projects, and new 3-D modeling initiatives were launched using recently acquired color orthophotography, digital terrain models, and locally collected data sets.

METRO TELEVISION

Metro Television continues to produce the monthly series, *Working City*, for the City of Eugene. All regularly scheduled meetings of the Eugene City Council and Lane County Board of Commissioners are also cablecast live on Comcast Cable 21. Other programs on the station include: *Center for Medicare*, *Road to Recovery*, and programming from the Oregon Public Affairs Network (OPAN) in Salem. A new program series is from the Radio Entertainment Network. It features programming from Radio Shows circa 1930-40. Visit metrotv.org for more programming information.

CREATIVE SERVICES

Creative Services staff produced a wide variety of materials for natural resource projects, small cities, and other member agencies including financial reports, newsletters, presentation materials, maps, reports, and websites. Staff produced the *Region 2050* newspaper insert *Design Your Future*; designed the Clean Lane Fuel logo; and developed and maintained a number of websites, including KeepUsMoving.info. The LCOG Open House was a new and successful outreach effort, and gave staff the opportunity to share information about LCOG services and unveil LCOG's updated logo.

REGIONAL TELECOMMUNICATIONS

LCOG's telephone consortium provides more than 10,000 telephone connections for 8 public agencies. The telephone consortium provided: new systems for 4J, LCC and City of Eugene; new cell phone policies for 4J and Lane County; and voice over internet (VoIP) sites in Corvallis, 4J and Springfield. LCOG coordinated a planning process with the cities of Eugene and Springfield culminating in a joint, adopted interoperable communications plan for Police, Fire, Emergency Medical and Public Works departments. LCOG assisted the Lane County Fire Defense Board in developing a draft interoperable communications plan, a radio frequency reallocation plan, and a successful application for Department of Homeland Security funding to develop a interoperable communications plan for fire and emergency medical responders in Lane County. LCOG also successfully assisted the City of Eugene in responding to a COPS Interoperable Communications Grant. This grant will provide \$3 million for the cities of Eugene and Springfield, Lane County, and EWEB to develop a shared radio system and joint interoperable communications plan.

“I wanted to make sure that I also conveyed our thankfulness for the services RLID provides, and let you know how much we appreciate everyone there. I have quite a few record subscriptions in various counties in the state, and none compare with RLID's customer service care.”
- RLID subscriber



SENIOR AND DISABLED SERVICES



“You have helped us very much. We don't know what we would have done without your help. I was treated as a person, not just a file.”
- Senior and Disabled Services client

LONG TERM CARE

An average of 2,653 persons per week received S&DS-administered long term care services funded by Medicaid or Oregon Project Independence. Individuals who received long term care services in 2004-05 also received service planning and implementation assistance from an S&DS Case Manager. As part of providing case management to residents of nursing homes, S&DS Case Managers relocated 101 residents to less restrictive and less costly care settings. Under the terms of a special contract with Housing Administration Community Service Authority (HACSA), S&DS continued to provide assessment and case management assistance to residents of public housing facilities owned and operated by the HACSA.

FINANCIAL SERVICES

Financial Services workers determine eligibility for Medical Assistance, Food Stamps, and General Assistance, and work with clients. S&DS' staff completed 1,966 Financial Services intakes between July 2004 and June 2005. Many applicants were seeking both medical assistance (via the Oregon Health Plan) and Food Stamps. The agency's medical review team made 161 disability determinations in the fiscal year. At the end of June 2005, S&DS' Financial Services workers were providing Food Stamps for 5,727 individuals and Medicaid Assistance benefits for 7,266 individuals.

PROTECTIVE SERVICES

During the year, S&DS received 1,841 complaints of abuse, neglect, or exploitation of seniors and people with disabilities, up 362 from last year. 1,107 of them resulted in formal investigations. Of the balance, most were referred to others for follow-up. Of the investigations completed, 735 involved individuals living in community settings outside of licensed facilities; the remaining 359 complaints involved licensed care facilities.

SENIOR CONNECTIONS

The Senior Connections program provided 33,305 Information and Referral Service contacts to older clients and members of their families, and delivered Case Management services to 1,301 frail, homebound older persons who needed assistance in order to remain independent in their own homes or apartments. Senior Connections staff and volunteers assisted 225 individuals obtain low and no-cost prescription medications from pharmaceutical manufacturers. They also recruited, placed

and supervised 158 volunteers who provided companionship, support, and transportation to program clients. Senior Connections staff assisted 4,254 family caregivers with information, caregiver training, and direct services, including 6,418 hours of respite care.

SENIOR MEALS AND MEALS ON WHEELS

72,860 meals were provided to 1,098 participants in the program's group dining rooms. During 2004-05, staff and volunteers raised \$177,400 in community donations for current operations. The program also received a bequest in the amount of \$149,405 for services in Cottage Grove and environs. Plans for the utilization of this generous gift are still being formulated. An endowment fund, under the auspices of Southern Willamette Services Corporation, grew to \$125,562 by fiscal year-end. The goal of the endowment is to generate sufficient income on an annual basis to sustain program services. To achieve this goal, the endowment's corpus needs to grow to several million dollars. The program launched a planned giving campaign early in 2005 to achieve this goal.

AGENCY COORDINATION

To promote inter-agency cooperation on behalf of seniors and people with disabilities, staff continued to represent S&DS on a large number of committees, councils, and groups within Lane County. S&DS staff also continued to work closely with law enforcement agencies throughout the county, including local police departments, the Lane County Sheriff's office, and the Oregon State Police. S&DS managers and supervisors met regularly with the heads of the social work departments of Sacred Heart and McKenzie Willamette hospitals to facilitate positive working relationships between S&DS and these acute care hospitals.

ADVOCACY

Under the leadership of the Advocacy Committee of the Senior and Disability Services Advisory Councils, a multi-faceted program was developed and implemented to promote senior and disability issues during the 2005 session of the State Legislature. The components of this program were the development of eight priorities to strengthen Oregon's senior and disability services system, implementation of an *adopt-a-legislator*, and hosting of three dialogues for members of the Lane County legislative delegation. These events offered senior and disability advocates opportunities to meet local legislators, learn about the progress of the legislative session, and share their concerns about specific bills and the human services budget directly with legislators.