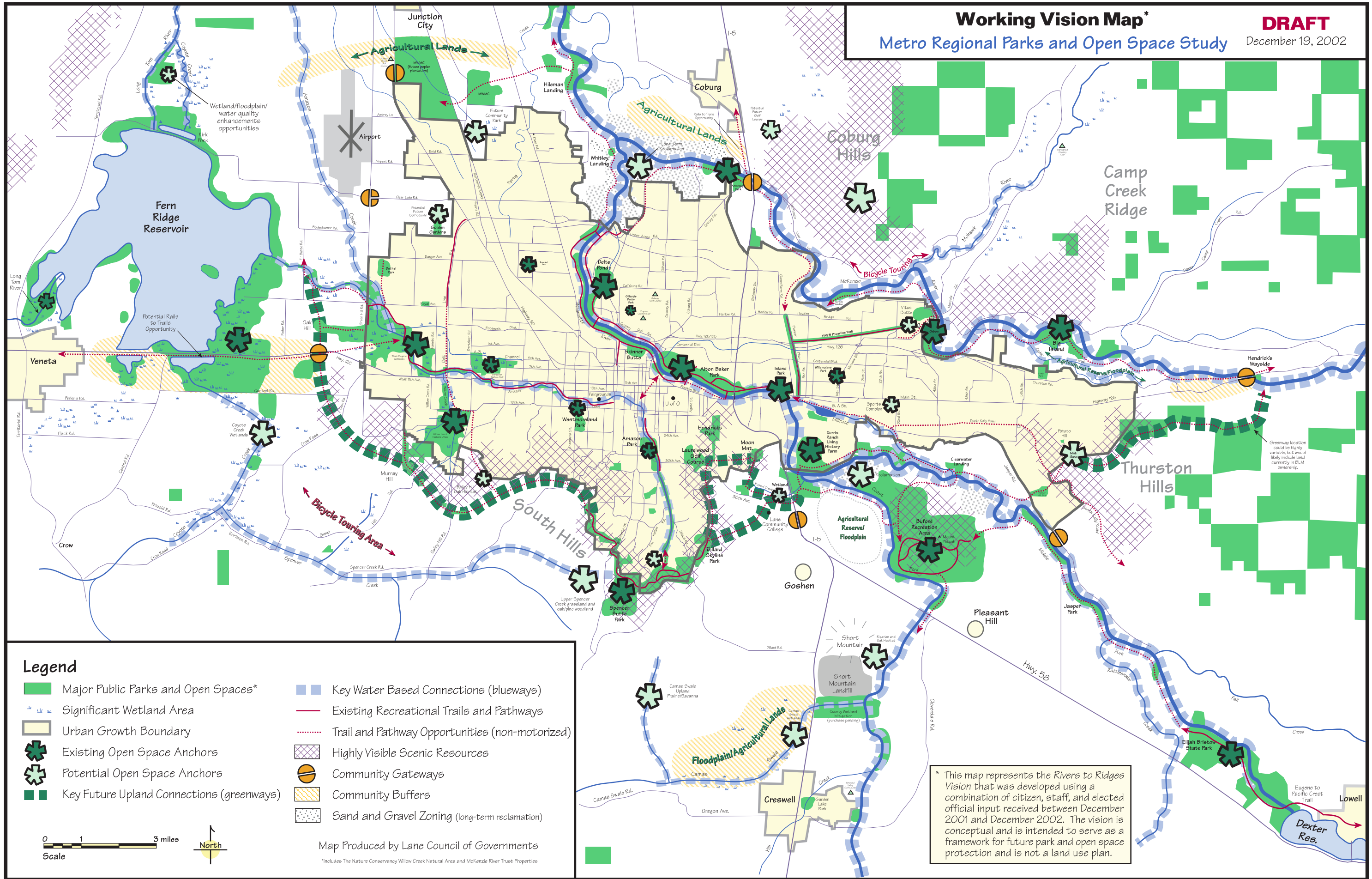


Working Vision Map*

Metro Regional Parks and Open Space Study

DRAFT
December 19, 2002



Legend

- Major Public Parks and Open Spaces*
- Significant Wetland Area
- Urban Growth Boundary
- Existing Open Space Anchors
- Potential Open Space Anchors
- Key Future Upland Connections (greenways)
- Key Water Based Connections (blueways)
- Existing Recreational Trails and Pathways
- Trail and Pathway Opportunities (non-motorized)
- Highly Visible Scenic Resources
- Community Gateways
- Community Buffers
- Sand and Gravel Zoning (long-term reclamation)



Map Produced by Lane Council of Governments
*Includes The Nature Conservancy Willow Creek Natural Area and McKenzie River Trust Properties

* This map represents the Rivers to Ridges Vision that was developed using a combination of citizen, staff, and elected official input received between December 2001 and December 2002. The vision is conceptual and is intended to serve as a framework for future park and open space protection and is not a land use plan.