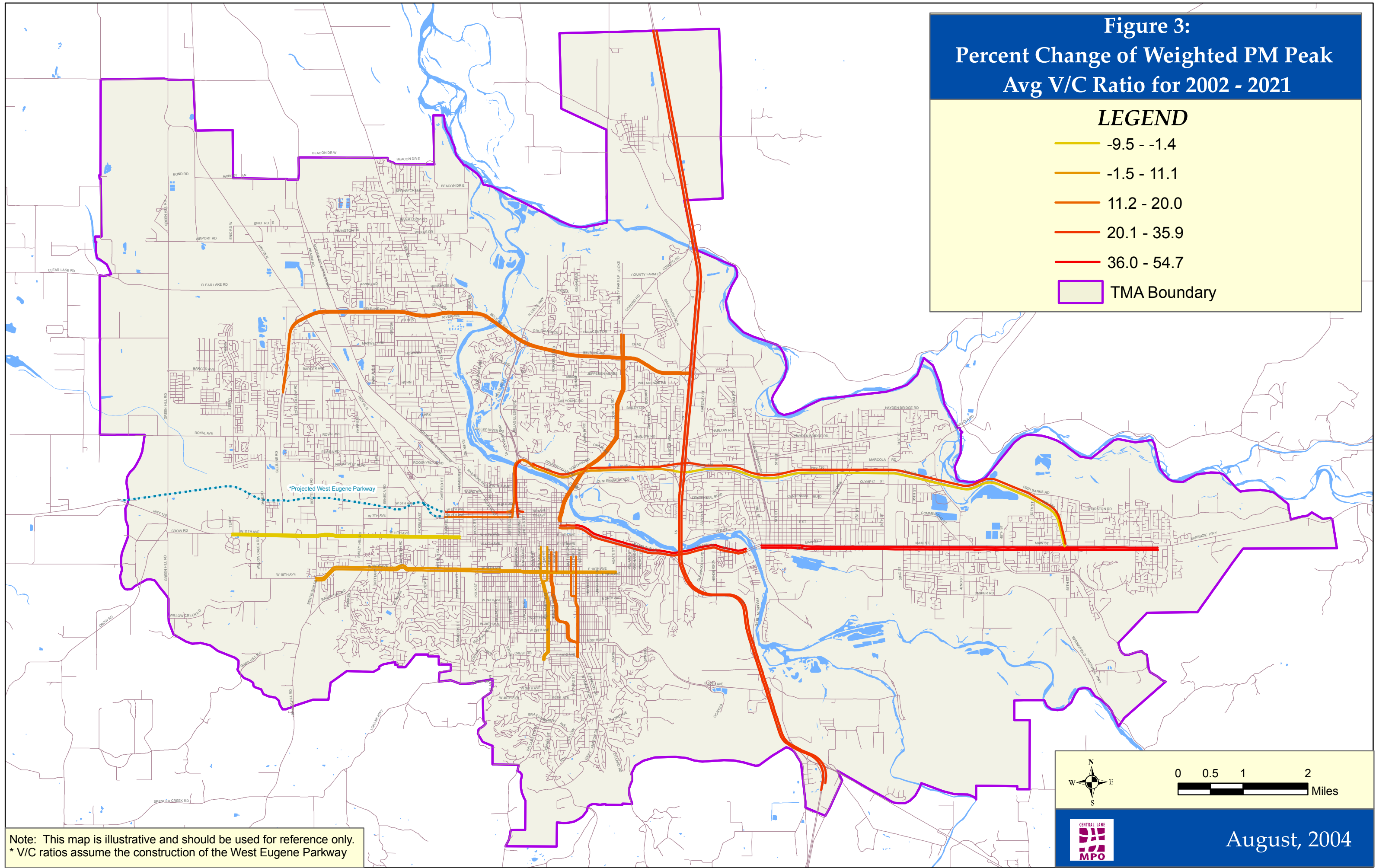


**Figure 3:
Percent Change of Weighted PM Peak
Avg V/C Ratio for 2002 - 2021**

LEGEND

- -9.5 - -1.4
- -1.5 - 11.1
- 11.2 - 20.0
- 20.1 - 35.9
- 36.0 - 54.7
- TMA Boundary



Note: This map is illustrative and should be used for reference only.
* V/C ratios assume the construction of the West Eugene Parkway

0 0.5 1 2 Miles



August, 2004