




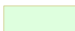
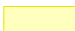
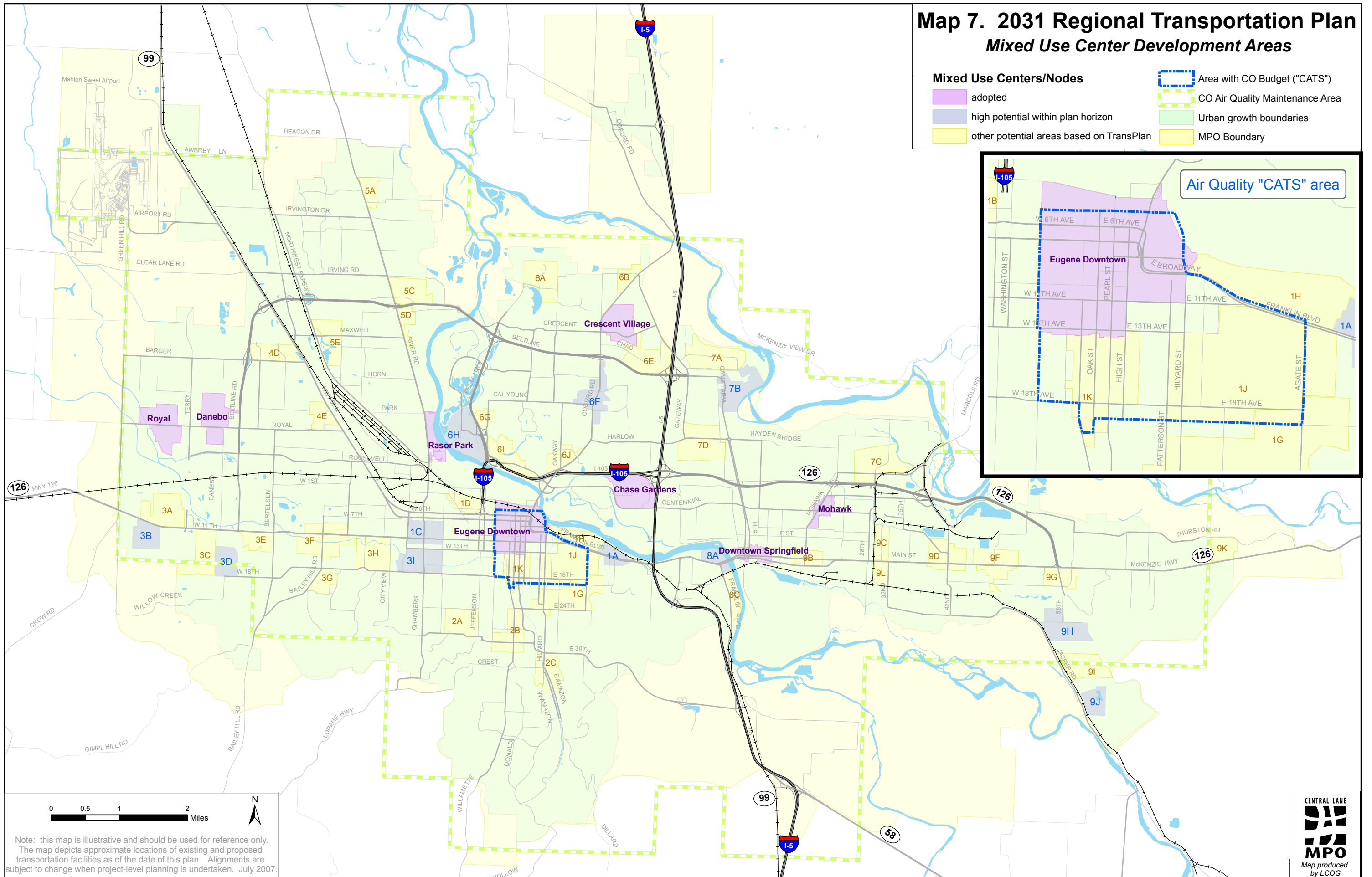


Map 7. 2031 Regional Transportation Plan Mixed Use Center Development Areas

- | | |
|--|---|
|  adopted |  Area with CO Budget ("CATS") |
|  high potential within plan horizon |  CO Air Quality Maintenance Area |
|  other potential areas based on TransPlan |  Urban growth boundaries |
| |  MPO Boundary |



Note: this map is illustrative and should be used for reference only. The map depicts approximate locations of existing and proposed transportation facilities as of the date of this plan. Alignments are subject to change when project-level planning is undertaken. July 2007.