

### Disabled Concentration within the Central Lane Metropolitan Planning Organization Area

This map displays the percentage of persons with disabilities by census block group from the 2000 Census. For the Central Lane Metropolitan Planning Organization Area as a whole, this percentage was 18%.

#### % Disabled by Block Group

- 25.5 - 48.0
- 19.0 - 25.4
- 15.4 - 18.9
- 5.7 - 15.3

*Each color grouping contains about 25% of the disabled population*



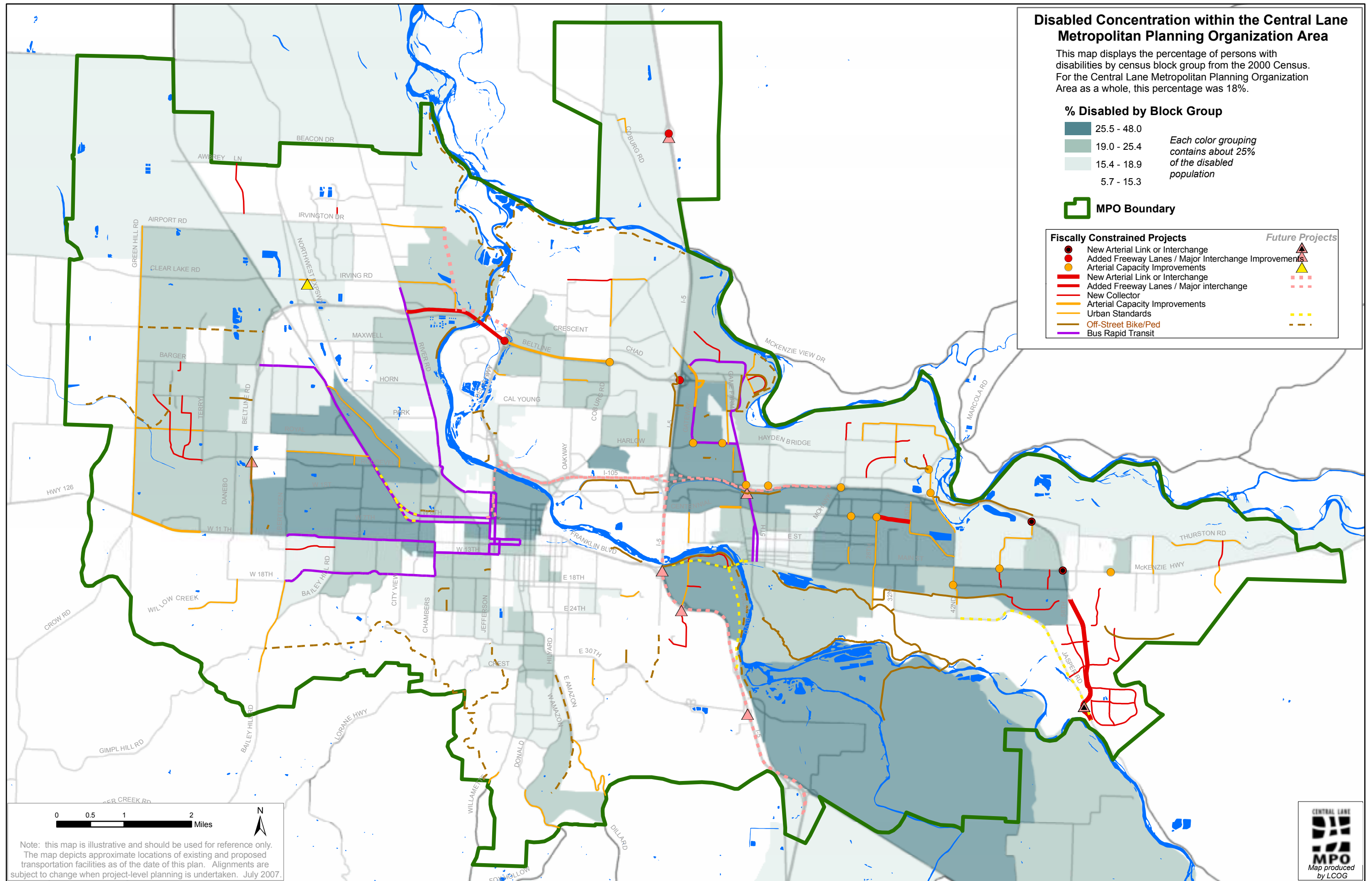
MPO Boundary

#### Fiscally Constrained Projects

- New Arterial Link or Interchange
- Added Freeway Lanes / Major Interchange Improvements
- Arterial Capacity Improvements
- New Arterial Link or Interchange
- Added Freeway Lanes / Major interchange
- New Collector
- Arterial Capacity Improvements
- Urban Standards
- Off-Street Bike/Ped
- Bus Rapid Transit

#### Future Projects

- New Arterial Link or Interchange
- Added Freeway Lanes / Major Interchange Improvements
- Arterial Capacity Improvements
- New Arterial Link or Interchange
- Added Freeway Lanes / Major interchange
- New Collector
- Arterial Capacity Improvements
- Urban Standards
- Off-Street Bike/Ped
- Bus Rapid Transit



Note: this map is illustrative and should be used for reference only. The map depicts approximate locations of existing and proposed transportation facilities as of the date of this plan. Alignments are subject to change when project-level planning is undertaken. July 2007.

