



APPENDIX H

***Maps Developed for
Environmental Coordination
Requirements of SAFETEA-LU
§6001***

Appendix H: Maps Developed for Environmental Coordination Requirements of SAFETEA-LU §6001

Note that the Environmental Consultation Maps are available at:
http://www.lcog.org/mpo/rtp_environ.html

Introduction

I. Base Data

1. Context
2. 2031 Regional Transportation Plan Construction Projects
3. Federal Functional Class of Roadways

II. Socioeconomic/Cultural Data

4. Household Poverty Concentration
5. Elderly Population Concentration
6. Minority Population Concentration
7. Disabled Population Concentration
8. National Register Historic Districts and Historic Properties

III. Environmental Quality

9. Air Quality
10. Environmental Cleanup Sites
11. Toxic Release Inventory Permitted Sites

IV. Waterways and Water Quality

12. DEQ 303d Listed Streams and Southern Willamette Valley Groundwater Management Area
13. Navigable Rivers and Metro Waterways Study Areas
14. FEMA Flood Hazard
15. Watershed Boundaries and Stormwater Basins

V. Fish & Wildlife Habitat

16. Federally Listed Threatened and Endangered Fish Species
17. Federal and/or State Listed Threatened and Endangered Species (non-fish)
18. Federal & State Threatened & Endangered Species, Sensitive Species, and Species of Concern
19. Oregon Conservation Strategy
20. Barriers to Fish Passage

VI. Landuse/Planning

21. Comprehensive Plans
22. Goal 3 & 4 Farm and Forest Lands
23. Goal 5 Natural Resources
24. Goal 15 Greenway – Recreation and Conservation Lands
25. Soils
26. Natural Hazards – Seismic Zones

VII. Wetlands

27. Wetlands—West Eugene Wetlands, Local Wetland Inventories, National Wetland Inventory
28. Mitigation Bank Service Areas
29. Mitigation Bank—Existing Sites

Introduction

The maps produced for this consultation superimpose transportation projects from the long range plan of the Central Lane Metropolitan Planning Organization (MPO) (2031 RTP) on top of environmental, cultural, and social data collected from other sources over the time period January – July 2007. The intent is to provide a scan that will enable potential issues relating to future transportation projects to be identified and explored prior to costing, alignment and other decisions that must be made during project development. The alignments and extents of the projects from the 2031 RTP are only approximate at this stage. Refinements would be typically made during project development.

The MPO maintains the transportation database only; all other data are created and maintained by the source agencies. To the best of our knowledge, these data bases are up to date as of 1 July 2007. If there is an error found in the display or implementation of any of the data bases, we request that you contact the MPO with your observations. Errors or omissions in the data per se can only be updated by the source agencies.

I. Base data

1. Context

The Central Lane Metropolitan Planning Organization (MPO) is located in the southern end of the Willamette Valley in Lane County, Oregon. The MPO contains the areas within the urban growth boundaries of the cities of Eugene, Springfield and Coburg, as well as surrounding rural lands. Under federal law, the MPO boundary is based on the urbanized area defined in the 2000 Census. Since the population within this boundary exceeds 200,000, the MPO is a Transportation Management Area (TMA), and thus directly receives Federal Surface Transportation - Urban (STP-U) funds for funding transportation projects. It is the second largest MPO in Oregon, behind Portland Metro. The TMA contains 86% of jobs and 60% of the population of Lane County.

Lane Council of Governments (LCOG) was appointed by the Governor as the MPO for this area. The policy board of the MPO consists of elected representatives from Lane County, City of Eugene, City of Springfield, and City of Coburg, and appointed representatives from Oregon Department of Transportation (ODOT), and Lane Transit District (LTD).

The MPO is located at the base of the foothills of the Cascades and just east of the Coast Range at elevation of about 450 feet. It lies within the Willamette River Basin near the confluences of the McKenzie River with the mainstem Willamette River, and the confluence of the Coast and the Middle Forks of the Willamette. The area is mostly flat with the occasional volcanic butte, and is edged by the South Hills. The climate is one of cool, wet winters and warm, dry summers. Rainfall is about 45 inches per year, falling mostly from October through May.

The historic landscape of the area was a diverse combination of wet prairie, wetlands and ash swales on the valley floor, upland prairie, oak and pine savannas, and oak/fir woodlands on the thinner soils of the foothills, with floodplain forests along the major rivers. Poorly drained clay soils in the valley bottoms held standing water for many months during winter, and the rivers and creeks frequently flooded.

In addition to the impact of the floods, landscape diversity was maintained by the Kalapuya peoples who burned the prairies and savannas to enhance camas production and grasses for the deer and elk herds. This practice maintained the biodiversity and kept the firs from encroaching. White settlement began in 1840's and in 1846 Eugene Skinner settled in what would become the City of Eugene. The early settlers turned the open prairies and savannas into farmlands, and tilled and drained wet areas. As the Kalapuya were displaced, annual burning ceased, and fir forests became established in the foothills replacing much of the oak woodland and savannas. It is estimated that over 99% of the historic prairie has been lost.

The Willamette Basin Project in the 1940's built dams on the Willamette River (Fall Creek, Dexter and Lookout Point) and the Long Tom River (Fern Ridge Reservoir), as well as in the upper McKenzie River basin. This has greatly diminished the frequency and size of floods, and has allowed control of river levels. Revetments prevent river meanders, and the logging of large trees within the riparian floodplain forest has reduced the recruitment of large woody debris. Together, all these factors have simplified the rivers and reduced the off-channels habitat that once supported the rearing of fish.

Environmental issues in the MPO area today primarily revolve around wetland impacts. A number of endangered and threatened species have been protected in the West Eugene Wetlands, and the City operates a wetland mitigation bank located inside the MPO area. USFWS recently has

designated critical habitat areas for three listed species (2 plants, 1 butterfly) associated with wet prairie habitats. Other significant concerns include stormwater discharge into the Willamette and McKenzie Rivers and tributaries with potential impact on the listed fish species. Interest in preserving and restoring upland prairie and oak savanna habitats is increasing within the community.

Data Sources:

Willamette River Basin Planning Atlas. Trajectories of Environmental and Ecological Change. Pacific Northwest Ecosystem Research Consortium. 2002. OSU Press.

City of Eugene, Parks and Open Space, West Eugene Wetlands:

http://www.eugene-or.gov/portal/server.pt?space=CommunityPage&cached=true&parentname=CommunityPage&parentid=7&in_hi_userid=2&control=SetCommunity&CommunityID=667&PageID=1506

2. 2031 Regional Transportation Plan Construction Projects

The MPO's federal Regional Transportation Plan (RTP) contains a list of transportation projects that are expected to be constructed within the MPO by the horizon year 2031. The project list is developed by the MPO partner agencies: Lane County, the Cities of Eugene, Springfield and Coburg, the Oregon Department of Transportation (ODOT), and Lane Transit District (LTD). The Willamalane Parks and Recreation District also contributes projects. The MPO itself conducts planning, and does not construct projects.

The projects are primarily drawn from these partners' long range plans (including Transportation System Plans, modal components of the Oregon Transportation Plan, LTD and Willamalane strategic plans and others). There are two sets: the "fiscally constrained" list contains projects for which the anticipated cost is reasonably expected to be covered by identified sources and strategies, and the "future" (or "illustrative") list which contains projects for which no funding source is yet identified. Fiscally constrained projects are the most likely to be built.

Each list is further divided into Roadway Projects, Transit Projects, and Bike/Pedestrian Projects. Planning projects are not required to be included. The list also does not include pavement resurfacing, bridge replacement, or safety projects that arise due to unanticipated circumstances.

This map shows all construction projects listed in the RTP, excluding transit projects that are highly unlikely to require new right-of-way or lane construction, and bike/pedestrian projects that occur on existing roadways. The former includes new stops, shelters, and new bus service utilizing operational enhancements only. The latter includes striping of bike lanes.

Most projects on the list will occur on existing roadways. Some new alignments are listed and are categorized on the maps as "Off-Street Bike/Ped", "New Arterial Link", and "New Collector". A "New Interchange" would likely be built on an existing road, but would require expanded right of way, as would "Added Freeway Lanes/Major Interchange Improvements". The locations shown for the projects at this time are approximate only. *During project-level planning and development, more intensive study of the area is made and alignments or project extents can change in order to avoid or minimize impact to environmental, cultural or social resources.*

The numbers on each mapped project refer to the RTP project id (identification). The description for each project can be located using this id by referring to the lists published on the MPO's RTP web

site: <http://www.lcog.org/mpo/rtp.html>. These numbers are removed from all the other maps in this consultation to improve readability.

3. Federal Functional Class of Roadways

Roadways are classified as to the type of service intended and the amount of traffic they carry or will carry. Functional classification is used to determine the design standards, and also determines federal aid eligibility (federal funds cannot be used on “local roads” or “rural minor collectors”). Federal functional classification is assigned using federal guidelines, and is approved by Federal Highways Administration (FHWA). After each decennial census, the MPO consults with its partner agencies and submits updates to ODOT so as to include new roadways and reflect changes in use. Updates can also occur during interim years. This map shows the latest classifications within the Central Lane MPO.

In urbanized areas, the principal arterial system usually carries 40-65% of vehicles miles traveled (VMT); principal plus minor arterial system carries 65-80% VMT; collector street system 5-10% VMT, and local street system 10-30% VMT. In rural areas, VMT distribution is somewhat different with greater reliance on rural collectors.

Data Sources:

LCOG: Centerline Data Base, 2007.

Oregon Department of Transportation, Transportation Development – Transportation Data:

<http://www.oregon.gov/ODOT/TD/TDATA/rics/FunctionalClassification.shtml>

FHWA Functional Classification guidelines:

http://www.fhwa.dot.gov/planning/fcsec1_1.htm

II. Socioeconomic/Cultural Data

The MPO is required to consider the impact that projects may have on minority and low-income populations in consideration of environmental justice issues. In addition, elderly and disabled populations are also considered. Census 2000 provides various types of data by census block group. Block groups generally contain between 600 and 3,000 people with an optimum size of 1,500 people, so that in rural areas, block groups tend to be large in area with low population density while in urban areas, block groups are smaller in area with more concentrated populations. For this analysis, all block groups intersecting the MPO boundary were considered.

4. Household Poverty Concentration

Within the MPO, 15 percent of all households had an income below the 1999 federal poverty level, also called the “poverty threshold” (this equated to about \$17,000 for a family of four). This map shows the distribution of these populations overlaid with the RTP projects. The block groups were arranged in descending order of the percent of households in poverty within the block group. This ordered list was then divided into four parts, each of which contained one quarter of the total number of poor households, and each was assigned a color. The darker the color is, the greater the density of poor households. The darkest grey-green colored areas on this map are the areas in which 36% or more of the households within each block group are low income (see map legend).

The actual distance of a low income household from a particular project cannot be deduced from this map, since there is no information in the census data as to the location of the household within the block group. However, due to the density, the likelihood of impact is greatest in the darkest areas on this map.

Data Sources:

U.S. Census Bureau, Census 2000. Summary file SF3, table P92: Poverty Status in 1999 of Households by Household Type by Age of Householder:

<http://www.census.gov/main/www/cen2000.html>

U.S. Census Bureau, Household Income and Persons Below Poverty:

http://quickfacts.census.gov/qfd/meta/long_IPE120204.htm

5. Elderly Population Concentration

This map utilizes Census 2000 block group data to map elderly population concentrations within the MPO. For this analysis “elderly” was assumed to consist of persons 65 years and older. Within the MPO, 12 percent of the population was elderly. As was done for the Household Poverty mapping, block groups with the highest percent of elderly population were mapped in the darkest color, and each color represents the area in which 25 percent of the elderly population dwells. Here, darkest color represents the block groups in which at least 19 percent of the population is 65 years and older (see map legend).

Data Source:

U.S. Census Bureau, Census 2000. Summary file SF3, table P12: Sex by Age:

<http://www.census.gov/main/www/cen2000.html>

6. Minority Population Concentration

This map utilizes Census 2000 block group data to map minority population concentrations within the MPO. For this analysis, “minority” was defined to be all persons who identified themselves as non-white or Hispanic. Within the MPO as a whole, 13 percent of the population belongs to a minority group. As was done for the Household Poverty mapping, block groups with the highest percent minority population were mapped in the darkest color, and each color represents the area in which 25 percent of the minority population dwells. Here, darkest color represents the block groups in which at least 19 percent of the population belongs to a minority (see map legend).

Data Source:

U.S. Census Bureau, Census 2000. Summary file SF1, table P4: Hispanic or Latino, and Not Hispanic or Latino by Race:

<http://www.census.gov/main/www/cen2000.html>

7. Disabled Population Concentration

This map utilizes Census 2000 block group data to map disabled population concentrations within the MPO. For this analysis, “disabled” was defined to be all civilian non-institutionalized persons 5 years and older. Within the MPO as a whole, 18 percent of the population was identified as disabled. As was done for the Household Poverty mapping, block groups with the highest percent disabled population were mapped in the darkest color, and each color represents the area in which 25 percent of the disabled population dwells. Here, darkest color represents the block groups in which at least 25.5 percent of the population is disabled.

Data Source:

U.S. Census Bureau, Census 2000. Summary file SF3, table P42: Sex by Age by Disability Status by Employment Status for the Civilian Non-institutionalized Population 5 Years and Over:

<http://www.census.gov/main/www/cen2000.html>

8. National Register Historic Districts and Historic Properties

There are five National Register Historic Districts within the Central Lane MPO boundary.

- Coburg Historic District
- East Skinner Butte Historic District, Eugene
- Eugene Blair Boulevard Commercial Historic District
- Washburne Historic District, Springfield
- Dorris Ranch, Springfield

There are 50 National Register Historic Properties within the Central Lane MPO boundary, including Coburg, Eugene, Springfield and portions of Lane County. See Appendix for list.

In Oregon the National Register program is administered by the Oregon State Historic Preservation Office (SHPO). In some localities, which the National Park Service has designated Certified Local Governments (CLGs), the local government also manages aspects of the National Register program. Eugene is a Certified Local Government, so the City's Historic Preservation Program is responsible for nominating local properties to the National Register and for monitoring compliance with regulations placed on Register properties. The S-H Historic Zoning designation is used selectively to help ensure the conservation of historic properties in Eugene. Before a property can receive the S-H Historic zoning designation it must first be designated as a City Landmark or be listed in the National Register of Historic Places. Eugene also regulates Heritage Trees in the rights-of-way and prohibits removal of trees for street widening within the historic city limits of 1915.

Data Sources:

Oregon Parks & Recreation Department, Heritage Programs: National Register:

http://egov.oregon.gov/OPRD/HCD/NATREG/nrhp_intro.shtml

National Register of Historic Places:

<http://www.nationalregisterofhistoricplaces.com/OR/Lane/districts.html>

City of Eugene, Planning and Development. Historic Preservation:

http://www.eugene-or.gov/portal/server.pt?space=CommunityPage&cached=true&parentname=CommunityPage&parentid=0&in_hi_userid=2&control=SetCommunity&CommunityID=318&PageID=0

Staff Sources:

Mollie Manion, SHPO Archaeologist; Ken Guzowski, Senior Planner, Eugene; Petra Schuetz, Coburg Planner; Andrea Ball, GIS Tech, Springfield.

III. Environmental Quality**9. Air Quality**

An MPO must make an air quality conformity determination for all regional transportation plans (RTPs) and all transportation improvement programs (TIPs) where an air quality management area

has been defined and transportation sources have been identified as significant contributors to air pollution. USEPA, USDOT, and Oregon regulations describe the requirements.

In the Central Lane MPO area, an air quality management area (AQMA) was defined for carbon monoxide (CO) in 1980 and a transportation CO budget was established for a sub-area, the Eugene central business district. In 1993, the area was designated as in attainment of the national ambient air quality standards (NAAQS) for CO, and is now designated as a “maintenance area” for CO. There has not been a violation since 1980, and monitored data shows a steady decline in measured CO to almost background levels. There are no transportation control measures specified in the State Implementation Plan (SIP). Projects must comply with Lane Regional Air Protection Agency’s Indirect Source rules (Title 20) prior to construction. Hot spot analyses are required for project-levels conformity. These studies are carried out by the agencies managing the project.

The Eugene-Springfield region was designated as a non-attainment area for PM 10 (particulate matter, 10 microns and less) in 1987. Analyses of sources revealed that home wood heating was the major source of this pollution. Emissions from motor vehicles were found to be insignificant. Transportation conformity is thus not required for PM10. Hot spot analyses are required.

Data Sources:

State Implementation Plans (SIPS), U.S. EPA Region 10:

<http://yosemite.epa.gov/R10/AIRPAGE.NSF/webpage/SIP+-+General+Page>

Transportation Air Quality Conformity, Central Lane MPO:

<http://www.lcog.org/aqc/default.htm>

Lane Regional Air Protection Agency. Title 20, Indirect Source rules:

http://www.lrapa.org/rules/title20-Indirect_Sources.php

10. Environmental Cleanup Sites

This map shows the location where a release of hazardous substances has been documented as of May 30, 2007, and where, based on DEQ on-line data bases, a certificate of “No further action” has not yet been issued. The release sites are numbered using the ID provided within the DEQ data base referenced below. These sites can be entered into the search form for the ECSI Inventory to obtain further details.

The locations shown on the map are those of the actual release addresses. However, contamination may be spread over an area. In particular, *Site 312* (Eugene) refers to the Union Pacific Railroad – Eugene Yards. A ground water contamination plume has been mapped in this area. (See the Appendix for a map). *Site 1713* (Springfield) refers to the Weyerhaeuser mill site. A ground water contamination plume was detected in this area, with ongoing remedial action of ground water monitoring, maintenance and operation of the groundwater treatment system located at the SUB/Rainbow Water District well field.

Also shown on this map are leaking underground storage tanks (LUSTs) where releases of petroleum products have been reported through April 2007. These sites are numbered according to the DEQ LUST data base except that the county prefix (“20”) is excluded. Thus to lookup the details concerning a particular site, mapped as, say, 93-4129, enter the id prefixed by a “20”, e.g. 20-93-4129.

Data Sources:

Oregon Department of Environmental Quality, Land Quality, Environmental Cleanup:

<http://www.deq.state.or.us/lq/ecsi/ecsi.htm>

Oregon Department of Environmental Quality, Environmental Cleanup, ECSI Search Form:

<http://www.deq.state.or.us/lq/ecsi/ecsiquery.asp?listtype=ecsiinv.asp&listtitle=Inventory>

Oregon Department of Environmental Quality, Land Quality, Leaking Underground Storage Tank (LUST) Program:

<http://www.deq.state.or.us/lq/tanks/lust/index.htm>

Oregon Department of Environmental Quality, Tanks, LUST Cleanup Site Database:

<http://www.deq.state.or.us/lq/tanks/lust/LustPublicLookup.asp>

11. Toxic Release Inventory Permitted Sites

The source for this data is the USEPA's TRI Explorer website which is designed to help communities identify facilities in certain covered industries that use toxic chemicals, and, that by permit, release these chemicals into the air and water or to waste management sites. Reporting year 2005 is the most recent TRI data available. Facilities reporting to TRI were required to submit FY 2005 data to EPA by July 1, 2006. TRI Explorer is using a "frozen" data set based on submissions as of November 15, 2006 and released to the public on March 22, 2007 for the years 1988 to 2005 (i.e., revisions submitted to EPA after this time are not reflected in TRI Explorer reports). For list of chemicals by site see Appendix.

Data Source:

U.S. Environmental Protection Agency, TRI Explorer, Chemical Report:

www.epa.gov/triexplorer/

IV. Waterways and Water Quality**12. DEQ 303d listed Streams and Southern Willamette Valley Groundwater Management Area****SWV Groundwater Management Area**

Groundwater in the Willamette Valley between Eugene and Albany shows signs of contamination by human activities. Oregon Department of Environmental Quality (DEQ) declared a Groundwater Management Area (GWMA) on May 10, 2004 because of high concentrations of nitrate in the water. Oregon law requires that DEQ declare a groundwater management area when there is confirmation of nitrate contamination in the groundwater above 7.0 milligrams per liter (mg/L) and the suspected sources of nitrate are not facilities with permits, such as landfills or incinerators.

The Southern Willamette Valley Groundwater Management Area (GWMA) Action Plan has been finalized and will now serve to guide activities aimed at reducing nitrate contamination in the area's groundwater. The Action Plan is available at the following website:

<http://groundwater.oregonstate.edu/willamette/Plan.htm>

Data Sources:

Southern Willamette Valley Groundwater Management Area:

<http://groundwater.oregonstate.edu/willamette/Maps.htm>

LCOG: G:\projects\DEQ\GWMA_06

DEQ 303d listed Streams

DEQ prepared a draft Integrated Report and took public comments on the assessment during Fall 2005. Oregon's final 2004/2006 Integrated Report with the Section 303(d) list were submitted to the U.S. Environmental Protection Agency (EPA) Region 10 office on May 23, 2006 for review. This map was prepared using the DEQ 2002 303(d) Streams and Lakes GIS Coverage and updated using the data contained in Oregon's 2004/2006 Integrated Report on Water Quality Status.

DEQ evaluated water quality data for Oregon's waters using the "decision rules" in the Assessment Methodology for Oregon's 2004/2006 Integrated Report on Water Quality Status. DEQ assigned an assessment status category to each water body where data were available to evaluate. Water bodies that do not meet water quality standards are Water Quality Limited and are assigned Category 4 or Category 5. Water bodies in Category 5 need pollutant Total Maximum Daily Loads (TMDLs) developed and comprise the Section 303(d) list.

Data Source:

Oregon Department of Environmental Quality, Water Quality Assessment:

<http://www.deq.state.or.us/wq/assessment/assessment.htm>

Staff Source:

John Kuschell, GIS Analyst, GEO

TMDLs

A TMDL is the calculated pollutant amount that a waterbody can receive and still meet Oregon water quality standards. The Central Lane MPO Boundary intersects four subbasins as defined in the TMDL Order These subbasins are the Upper Willamette (portions of Long Tom and Muddy Creek Watersheds), McKenzie (Mohawk River and Lower McKenzie Watersheds), Middle Fork Willamette (Lower Middle Fork Willamette Watershed), and Coast Fork Willamette (Lower Coast Fork Watershed). See **Map # 15 Watershed Boundaries and Stormwater Basins** for these watershed boundaries.

The Willamette Basin TMDL Order was approved by the U.S. Environmental Protection Agency (EPA) on Sept. 29, 2006. The Willamette Basin TMDL Executive Summary and details about each subbasin can be found at: <http://www.deq.state.or.us/wq/tmdls/willamette.htm#w>

13. Navigable Rivers and Metro Waterways Study Areas

Navigable Rivers

The Corps of Engineers is mandated to maintain navigation channels and harbors in a safe, cost-effective, environmentally acceptable manner. The Portland District of the U.S. Army Corps of Engineers provides a list of "Navigable Riverways within the State of Oregon" dated October 1993. Portions of two rivers within the Central Lane MPO boundary are classified as Navigable Riverways. These include the McKenzie River from its confluence with the Willamette River up to approximately 1.2 miles downstream of Leaburg Dam, declared navigable by 9th Circuit Court decision in 1982, and the Willamette River up to 1 mile upstream of I-5 bridge.

Data Source:

Navigable Rivers within the State of Oregon, Portland District Corps of Engineers, October 1993:

<https://www.nwp.usace.army.mil/op/g/docs/Navigable%20Waterways%20Within%20the%20State%20of%20Oregon.pdf>

Metro Waterways Study Areas

The U.S. Army Corps of Engineers, in partnership with the cities of Eugene and Springfield and Lane County, has begun a multi-year study for identifying and evaluating problem areas and opportunities related to the function and health of our local waterways. The study will examine issues related to flood protection and drainage management, conservation of wildlife and aquatic habitat, water quality, open spaces, and recreational and educational opportunities. The eventual goal of the study is to identify and select specific improvement projects designed to fix problems and improve overall conditions of our waterways. The study is now underway and Amazon Creek in the Eugene area and Cedar Creek in the Springfield area have been selected as the initial drainage areas for study. Portions of both the Amazon Creek and Cedar Creek Study Areas lie within the Central Lane MPO boundary.

Data Source:

Metro Waterways: A Study of the Eugene-Springfield Metropolitan Region:

<http://www.metrowaterways.org/>

14. FEMA Flood Hazard

The Flood Zones depicted on this map are derived from the Federal Emergency Management Agency's (FEMA) Flood Insurance Rate Map (FIRM) or Flood Hazard Boundary Maps in the area of the Central Lane MPO. Flood zones are geographic areas that the FEMA has defined according to varying levels of flood risk. Each zone reflects the severity or type of flooding in the area. The label "100-year floodplain" denotes areas with a 1% annual chance of flooding and a 26% chance of flooding over the life of a 30-year mortgage as defined by FEMA. The areas labeled "Floodway" are river or stream flood hazard areas, and areas with a 1% or greater chance of shallow flooding each year, usually in the form of sheet flow, with an average depth ranging from 1 to 3 feet.

Data Sources:

Federal Emergency Management Agency (FEMA):

<http://www.fema.gov/>

FEMA, Definitions of FEMA Flood Zone Designations:

<http://msc.fema.gov/webapp/wcs/stores/servlet/info?storeId=10001&catalogId=10001&langId=-1&content=floodZones&title=FEMA%20Flood%20Zone%20Designations>

15. Watershed Boundaries and Stormwater Basins

(For discussion of TMDLs—See Map #12)

The MPO area is located within the Willamette River Basin. It lies within the fifth field watersheds of the Long Tom River (17090301), the Mohawk River (17090402), the Lower Coast Fork Willamette River (17090205), the Lower McKenzie River (17090401), the Lower Middle Fork Willamette River (17090101), and Muddy Creek (17090302). In the developed areas, the stormwater system of pipes and drainage ditches can direct runoff across natural watershed boundaries to drain into a different river system. This map overlays the natural watershed boundaries with the storm drain basins of the cities of Eugene and Springfield.

In Eugene, sub-basins have been mapped and sub-basin plans are in place for the entire area within the urban growth boundary. The map shows the receiving water and the relevant plan for each sub-basin.

In Springfield, the sub-basin plans are not yet available. In some areas outside the city limits, no stormwater infrastructure yet exists. However the City of Springfield indicates that runoff in some of these areas may in the future be directed outside the natural drainage basin. In these areas, the current river system receiving runoff is indicated, along with the future, expected “other recipient” or alternative river system. In the Weyerhaeuser area, there is a small area in which water drains to different river systems depending on water levels. These are indicated on the map as having two potential destinations.

Sanitary sewers: Eugene and Springfield have sewer systems that transport wastewater to the regional treatment plant located at 410 River Avenue, Eugene. Here wastewater is treated in four separate processes before being discharged into the Willamette River. The removed solids are treated and converted for use as compost or fertilizer for agricultural fields. The treatment plant is the second-largest in the state, managing 50 million gallons/day in dry weather and 200 million gallons/day in wet weather.

The City of Coburg does not have a sewer system and, currently, all wastewater is treated by septic tanks. Development of a decentralized waste water system (STEP-effluent sewer system) is underway: this will involve city-wide collection of septic tank outflow with wastewater treatment and effluent reuse. The treatment facility is planned for an area north of the city. Discharge in winter will be to Muddy Creek.

Data Sources:

Oregon Geospatial Enterprise Office (GEO), Data Clearinghouse:

<http://www.oregon.gov/DAS/EISPD/GEO/alphalist.shtml#H>

Oregon Division of State Lands, Fourth and Fifth Field Hucs within State of OR:

<http://www.oregon.gov/DSL/PERMITS/docs/huc5.pdf>

City of Eugene, Stormwater Planning, Stormwater Basin Master Plans:

http://www.eugene-or.gov/portal/server.pt?space=CommunityPage&cached=true&parentname=CommunityPage&parentid=1&in_hi_userid=2&control=SetCommunity&CommunityID=690&PageID=1744

City of Springfield, Environmental Services Division, Stormwater Management Plan:

<http://www.ci.springfield.or.us/ESD/StormwaterMasterPlan.htm>

Metropolitan Wastewater Management Commission:

<http://www.mwmcpartners.org/RegionalSystem.htm>

City of Coburg, wastewater project:

http://www.coburgoregon.org/pgs/waste_water.htm

Staff Source:

Chuck Gottfried, City of Springfield.

V. Fish & Wildlife Habitat

Because of the number of Threatened and Endangered (T&E) Species that occur within the Central Lane MPO boundary, the set of maps concerning fish and wildlife habitats is designed to cover a range of

issues. Map #16.1 shows Designated Critical Habitat for the three species of Federally-listed T&E species. The critical habitat for the species overlap in many cases, therefore to increase readability of the maps, the Essential Fish Habitat (distribution) data are shown on Map 16.2. Designated Critical Habitat for non-fish (plant and animal) T&E species were shown on Map #17.1. Map 17.2 depicts current distribution and high quality habitat for these non-fish species. Map #18 includes available GIS data showing potential and current habitats for all federal and state species listed as threatened, endangered, sensitive, or species of concern. Map #19 shows the context for the Central Lane MPO environmental issues in the Oregon Conservation Strategy, both the Conservation Opportunity Areas and the Conservation Strategy Habitats. Map #20 depicts ODFW's fish barriers data.

16.1. Threatened & Endangered Fish-Critical Habitat

Federally listed Threatened & Endangered Fish species within the Central Lane MPO Boundary include:

- Chinook salmon (Upper Willamette River),
- Oregon chub
- Bull trout (Columbia River Basin).

Available recovery and conservation plans:

- Oregon Chub (*Oregonichthys crameri*) Recovery Plan 09/03/1998
http://ecos.fws.gov/docs/recovery_plans/1998/980903b.pdf
- Bull Trout -- U.S.A., conterminous, lower 48 states Draft Recovery Plan for Three of the Five Distinct Population Segments of Bull Trout (*Salvelinus confluentus*) 11/29/2002
http://ecos.fws.gov/docs/recovery_plans/2002/021129.pdf

Data Sources:

NOAA National Marine Fisheries Service, ESA Critical Habitat:

<http://www.nwr.noaa.gov/Salmon-Habitat/Critical-Habitat/Index.cfm>

Oregon State University Oregon Natural Heritage Information Center:

<http://oregonstate.edu/ornhic/index.html>

LCOG: G:\projects\onhp\OHNP2005

16.2. Threatened & Endangered Fish-Distribution

According to NOAA Fisheries staff, the geographic extent of Chinook salmon essential habitat was delineated USGS cataloging unit boundaries, so that the units were 4th field hydrologic units (polygons). Email correspondence confirmed that the data labeled Upper Willamette Chinook salmon ESU Habitat are a “good approximation” of Essential Fish Habitat mandated by Magnuson Steven Act.

The Designated Critical Habitat for Chinook salmon is available from the NOAA CH GIS data web page which states the following: “The fish distribution in this data set was compiled from data gathered from the Oregon Department of Fish and Wildlife (ODFW). Additionally, we received comments from the public, federal agencies, and state and tribal salmon co-managers during the rule making process. A detailed description of this process can be found in the following document: *Final Assessment of NOAA Fisheries' Critical Habitat Analytical Review Teams For 12 Evolutionarily Significant Units of Pacific Salmon and Steelhead*, NOAA Fisheries Protected Resources Division, 2005.

These data were compiled from statewide data sets, public comments, and the expert opinions of our Critical Habitat Analytical Review Teams (CHART). ... These data describe occupied and unoccupied habitat areas, as well as freshwater and estuarine spawning, rearing, and migration areas (i.e. Primary Constituent Elements or PCEs) identified in the final rule to designate critical habitat. The distribution of PCEs in these databases represent the areas where salmon and steelhead have been observed or where they are presumed to occur based on the professional judgment of biologists familiar with the watershed. Unoccupied areas were identified where the CHART determined that the habitat areas may be essential for conservation of the ESU.”

Data Sources:

NOAA National Marine Fisheries Service, Salmon Essential Fish Habitat:
<http://www.nwr.noaa.gov/Salmon-Habitat/Critical-Habitat/CH-GIS-Data.cfm>
<http://www.nwr.noaa.gov/Salmon-Habitat/Salmon-EFH/Index.cfm>
 Oregon State University Oregon Natural Heritage Information Center:
<http://oregonstate.edu/ornhic/index.html>
 LCOG: G:\projects\onhp\OHNP2005

Staff Sources:

Tom Loynes, NOAA; Steve Stone, NOAA; Paul Scheerer, Native Fish Investigations Project, ODFW.

17. Federal and/or State listed Threatened and Endangered Species (non-fish)

Federally listed Threatened & Endangered plant and animal species (non-fish) within the Central Lane MPO Boundary:

| | |
|-------------------------|---|
| Bald Eagle | (Delisted in June 2007) |
| Northern Spotted Owl* | T *Also listed by the State of Oregon as Threatened |
| Fender’s Blue Butterfly | E |
| Bradshaw’s Lomatium | E |
| Kincaid’s Lupine | T |
| Willamette Daisy | E |

Note: Although Northern Spotted Owl habitat does not occur within the MPO boundary, recent habitat occurs just outside the boundary and is included in the map.

USFWS recently designated Final Critical Habitat (CH) for Fender’s Blue Butterfly, Kincaid’s Lupine, and Willamette Daisy.

- Approximately 484 acres of Fender’s Blue Butterfly Critical Habitat exist within the MPO boundary in the West Eugene wetlands area, next to approximately 200 acres which lie outside the boundary to the northwest. Approximately 54 acres of Fender’s Blue Butterfly CH lie in the Coburg Hills approximately 1.2 miles from the MPO boundary to the northeast.
- In contiguous or overlapping locations, approximately 140 acres of Kincaid’s Lupine exist within the MPO boundary, next to approximately 65 acres outside the boundary to the northeast.

- Approximately 378 acres of Willamette Daisy Critical Habitat lie within the MPO boundary in West Eugene wetlands, near approximately 38 acres outside the boundary to the southwest in the Coyote Creek watershed.

Available recovery and conservation plans:

- Bradshaw's desert-parsley
[Lomatium bradshawii Lomatium bradshawii \(Bradshaw's lomatium\) Recovery Plan](#)
 08/13/1993
http://ecos.fws.gov/docs/recovery_plans/1993/930813b.pdf
- Northern spotted owl (OR, WA, CA) (Not within Central Lane MPO Boundary)
[Strix occidentalis caurina Draft Recovery Plan for the Northern Spotted Owl \(Strix occidentalis caurina\)](#) 04/26/2007
http://ecos.fws.gov/docs/recovery_plans/2007/070426.pdf

Oregon Natural Heritage Information Center data for the T&E species includes different features for different species.

- The six Northern Spotted Owl sites are represented by points buffered by 100 ft. or 400 ft. and classified as Spotted Owl Habitat Areas. Annual observation notes show most recent sightings in 2001. Note: none are within the Central Lane MPO boundary.
- The four Fender's Blue Butterfly sites are polygons which approximate locations of small populations, or sightings of individuals in suitable Kincaid's Lupine habitat from which population estimates were derived.
- The ten Kincaid's Lupine sites are polygons approximating the observed populations, most of which are classified as having excellent or good estimated viability.
- The twenty Bradshaw's Lomatium are represented by polygons and points. Eight sites are made up of one or more polygon and twelve sites are points mostly buffered by 50 ft. with the one at Mt. Pisgah buffered by 1500 ft. and estimated to have good estimated viability. The other population with excellent estimated population viability is located on the Willow Creek Preserve. Fifteen of the populations are estimated to have fair or poor viability.
- The twelve Willamette Daisy sites consist of three points buffered at 50 ft. and one buffered at 1500 ft. and eight sites consisting of one or more polygon. Two are ranked as excellent or good estimated population viability, eight are ranked as fair or poor, and two were not ranked.
- Bald Eagle was delisted on June 29, 2007. Existing data is shown on the map: three Bald eagle breeding sites are shown as points buffered by 50 ft. All are near the Willamette River, including the new 2007 breeding site (ODFW staff consultation) shown on Skinner Butte.

Data Sources:

Oregon State University Oregon Natural Heritage Information Center:

<http://oregonstate.edu/ornhic/index.html>

U.S. Fish & Wildlife Service Threatened and Endangered Species System (TESS):

http://ecos.fws.gov/tess_public/SpeciesRecovery.do?sort=1

U.S. Fish & Wildlife Service Critical Habitat Portal:

<http://crithab.fws.gov>

LCOG: G:\projects\onhp\OHNP2005

Staff Sources:

David Leal, Wildlife Biologist, USFW; Matthew Lawhead, GIS Analyst, ODFW; James Kagan, Acting Director, ORNHIC; Brian Wolfer, ODFW District Biologist.

18. Federal & State Threatened & Endangered Species, Sensitive Species, and Species of Concern

This map includes all listed species, Federal and State, which occur or potentially occur in the Central Lane MPO area. See Appendix for the Oregon Sensitive Species list and USFW Federally Listed Threatened, Endangered, Candidate Species of Concern which may occur in the area of the Central Lane MPO.

Data Sources: Same as Maps #17.1 and 17.2.

19. Oregon Conservation Strategy

ODFW's Wildlife Conservation Strategy is an ambitious effort to synthesize the best available data, science, and knowledge into a broad vision and conceptual framework for long-term conservation of Oregon's native wildlife (including fish, wildlife (vertebrates and invertebrates) and plants.) It incorporates information and insights from a broad range of natural resources assessments and conservation plans, supplemented by the professional expertise and practical experiences of a cross-section of Oregon's resource managers and conservation interests.

The Conservation Strategy follows a "coarse filter" (habitat) – "fine filter" (species) approach to conservation planning. Conservation actions focused on the maintenance of natural habitats are likely to benefit a wider range of organisms than conservation actions developed for single species. It is the best way to maintain diverse and healthy wildlife communities. In addition, conserving larger areas of terrestrial or freshwater habitat preserves system-wide ecological processes critical to the viability of the ecosystems and the survival of wildlife species inhabiting them. These services benefit people as well. Strategy Habitats are the "coarse filters."

Species dependent on multiple habitats at different times during their life cycle, those that occur in a small geographic area, those with highly specialized needs, or those that travel across a large geographic area may require special attention. To ensure that the needs of "low and declining species" were addressed, Strategy Species include rare and/or at-risk fish, wildlife, invertebrates, and plants. Strategy Species are the "fine filters." In addition, the Conservation Strategy examines vulnerable animal concentrations and "Specialized and Local Habitats" that address particular landscape features. Used together, this "coarse filter/fine filter" approach is designed to best account for a wide variety of species and habitats in need of conservation attention.

Data Source:

Oregon Department of Fish and Wildlife (Wildlife Division) Conservation Strategy for Oregon:

<http://www.dfw.state.or.us/conservationstrategy/contents.asp>

20. Barriers to Fish Passage

This dataset depicts passable and impassable barriers to anadromous salmonid migration for the state of Oregon. Barrier types including dams, culverts, hatchery facilities and related structures, and the set of features described as cascades, gradient, velocity are represented in the dataset. The map shows whether the feature has no fishway, a present and functioning fishway, a fishway that is present but needs work, and a present fishway with unknown status. The features are labeled as complete, partial, and non-blocking barriers or off-channel dams or “unknown”.

Data Source:

Oregon Department of Fish and Wildlife Natural Resources Information Management Program:
<http://rainbow.dfw.state.or.us/nrimp/information/fishbarrierdata.htm>

VI. Land Use/Planning

21. Comprehensive Plans

Currently, three comprehensive plans guide land use within the Central Lane MPO boundary. The jurisdictional plans cover Coburg, Eugene/Springfield Metropolitan Area, and Lane County.

Data Source:

LCOG: X:\data\boundary\plans\mtpds

22. Goal 3 & 4 Farm and Forest Lands

Properties that would potentially require goals exceptions are designated agricultural or forest resource lands. Goals 3 and 4 apply to lands outside of urban growth boundaries.

Data Source:

LCOG: X:\data\boundary\plans\lcpds

23. Goal 5 Natural Resources

Coburg, Eugene, and Springfield have designated Goal 5 natural resource areas, and Lane County takes the Safe Harbor approach to Goal 5 natural resource protection. Within and outside the city limits of Eugene, the West Eugene Wetlands are recognized as a protected resource. Eugene has also designated other Goal 5 wetlands, as well as riparian and upland resources. Springfield has designated Goal 5 uplands and wetlands, and has defined specific buffering formulas for protecting Goal 5 riparian resources. Coburg has designated Goal 5 wetlands. Lane County does not have a Local Wetland Inventory; therefore the map depicts the National Wetland Inventory for Lane County areas outside of UGBs. The safe harbor riparian areas within Lane County but outside the Metropolitan Plan boundary and outside the Coburg UGB are shown as designated buffer widths on fish-bearing streams.

For more information on protection status of Eugene Goal 5 resources:

http://www.eugenenr.org/Eug_G5/default.htm and Goal 5 Inventory Map:

http://www.eugenenr.org/Eug_G5/Adopted_G5_Designations_Map_02-12-07a.pdf

Springfield resources: <http://www.ci.springfield.or.us/dsd/Planning/index.htm>

Coburg resources: <http://www.coburgoregon.org/pgs/planning.html>

Lane County resources: <http://www.lcog.org/metro/default.htm#metdoc>

Data Sources:

U.S. Fish & Wildlife Service Branch of Habitat Assessment Wetlands Information:

<http://wetlandfws.er.usgs.gov>

LCOG, City of Eugene, City of Springfield, City of Coburg.

24. Goal 15 Greenway – Recreation and Conservation Lands

Lands protected by Section 4(f) include publicly-owned parks, recreation areas, and wildlife and waterfowl refuges. There are no National Wildlife Refuges within or near the MPO boundary. Federal restrictions apply to Land & Water Conservation Funds properties owned by the USDA BLM. State land use Goal 15 protections apply to the Willamette River Greenway. Privately-owned conservation lands (The Nature Conservancy and McKenzie River Trust) are included to show context of other wildlife conservation habitat.

Data Sources:

U.S. Department of Agriculture Forest Service Lands and Realty Management:

<http://www.fs.fed.us/land/staff/LWCF/>

U.S. Department of the Interior National Park Service Land & Water Conservation Fund:

<http://www.nps.gov/ncrc/programs/lwcf/>

McKenzie River Trust:

<http://www.mckenzieriver.org/>

The Nature Conservancy:

<http://www.nature.org/wherewework/northamerica/states/oregon/>

LCOG: X:\data\parcel\taxlot

25. Soils

The 1987 NRCS Lane County Soil Survey data are shown with 2006 updates. This map represents general soil map units which typically consist of one or more major soils and some minor soils.

Data Sources:

U.S. Department of Agriculture Natural Resources Conservation Service Soil Survey:

<http://soils.usda.gov/survey>

LCOG: X:\data\natural\soils\NRCS_Soils

26. Natural Hazards – Seismic Zones

These data are from the Oregon Department of Geology and Mineral Industries series “Relative Earthquake Hazard Maps for Selected Urban Areas in Western Oregon.”

Data Source:

Oregon Department of Geology and Mineral Industries, Earthquakes and Other Natural Hazards in the Pacific Northwest:

<http://www.oregongeology.com/sub/earthquakes/earthquakehome.htm>

VII. Wetlands**27. Wetlands—West Eugene Wetlands, LWI, NWI**

Local Wetlands Inventories (LWIs) are comprehensive maps and information about wetlands throughout a city which are approved by Oregon DSL. The LWIs replace the National Wetlands Inventory (NWI) in urban areas. An LWI aims to map all wetlands at least 0.5 acres or larger at an accuracy of approximately 25 feet on a parcel-based map. Actual map accuracy varies, and areas that could not be field verified will be less accurate. (The LWI is not a substitute for a detailed delineation of wetland boundaries.)

Note: For more information about protection status of wetlands or significant wetlands, refer to individual cities: http://www.eugenenr.org/Eug_G5/LWI_Maps.htm
<http://www.ci.springfield.or.us/dsd/Planning/index.htm>
<http://www.coburgoregon.org/pgs/planning.html>

Data Sources:

Oregon Department of State Lands Wetlands Program:

<http://statelands.dsl.state.or.us/DSL/WETLAND/index.shtml>

28. Wetland Mitigation Bank Service Areas

The Central Lane MPO Boundary overlaps six existing Mitigation Bank Services Areas: Amazon Creek, City of Eugene, Evergreen, Muddy Creek, Mid Valley, and Oak Creek.

Data Sources:

Oregon Department of State Lands Mitigation Banks Status Report and Contact Information:

http://www.oregon.gov/DSL/PERMITS/mitbank_status.shtml

LCOG (Eugene): T:\MPO\RTP\FY06 2030 Update\EnvConsultationMaterials\MapsData\EugMitSites

29. Wetland Mitigation Bank—Existing Sites

Existing mitigation sites in or nearest to the Central Lane MPO boundary are Amazon Creek (approx. 78 ac.) and West Eugene (over 200 ac.). Other Mitigation Banks in progress are Long Tom near Monroe and Camasswale Bank near Creswell.

Data Sources:

Oregon Department of State Lands Mitigation Banks Status Report and Contact Information:

http://www.oregon.gov/DSL/PERMITS/mitbank_status.shtml

LCOG (Eugene): T:\MPO\RTP\FY06 2030 Update\EnvConsultationMaterials\MapsData\EugMitSites

APPENDIX

8. National Register Historic Districts and Historic Properties

Coburg Historic District

(added 1986 - **Lane County** - #86000036)

Also known as **See Also: Mathews, Nelson and Margaret, House**

Roughly bounded by Van Duyn Road, Diamond and Miller Streets, Dixon Street and Tax lots 1700 and 201, and Bottom Loop Road, Coburg
(1364 acres, 99 buildings)

Dorris Ranch

(added 1988 - **Lane County** - #88000724)

South Second Street at Dorris Avenue, Springfield
(1090 acres, 5 buildings, 1 structure)

East Skinner Butte Historic District

(added 1982 - **Lane County** - #82003732)

Pearl and High Streets, and 2nd and 3rd Avenues, Eugene
(100 acres, 27 buildings)

Eugene Blair Boulevard Historic Commercial Area

(added 1993 - **Lane County** - #93000928)

Also known as **Blair Island; See Also: Hayse Blacksmith Shop**

Blair Boulevard between West 3rd and West 5th Avenues, including Van Buren Street between Blair and West 3rd, Eugene
(68 acres, 19 buildings, 3 structures)

Washburne Historic District

(added 1987 - **Lane County** - #87000042)

Roughly bounded by G, North Tenth, A, and North Second Streets, Springfield
(840 acres, 246 buildings)

Source: <http://www.nationalregisterofhistoricplaces.com/OR/Lane/districts.html>

City of Eugene Historic Properties

| NAME | ADDRESS | NAT REG | CITY LNDMRK | PRIMARY |
|--|---|---------|-------------|---------|
| Young-Pallett House Kjaer House | 814 Lorane Highway | | X | |
| Wayne Morse Farm | 595 Crest Drive | X | | |
| Hope Abbey Mausoleum | 26 th and University | X | X | X |
| Masonic Cemetery | 26 th and University | X | X | X |
| Hampton/Church House | 2237 Spring Boulevard | | | X |
| Pliny E. Snodgrass House | 2691 Fairmount Boulevard | | | X |
| Lawrence T. Harris House | 2713 Fairmount Boulevard | | | X |
| Kerns/Chase House | 447 West 22 nd Avenue | | X | |
| Carl Washburne House | 2425 Fairmount Boulevard | | | X |
| James S. McMurray House | 930 East 21 st Avenue | | | X |
| G. H. McMorran House | 2315 McMorran Street | | | X |
| Archie Tirrell House | 2058 Olive Street | | | X |
| Frederick Smith House | 2056 Lincoln Street | | | X |
| Edgar Moore House | 96 W 20 th Avenue | | X | X |
| Masterson House | 2050 Madison | | X | |
| Hendricks Park | 2000x Fairmount Boulevard | | | X |
| Columbia College Marker | 1900 Olive Street | | | X |
| George M. Miller House | 1825 Fairmount Boulevard | | | X |
| Elliott-Barker House | 1740 Lawrence Street | | | X |
| Music Building | University of Oregon | | | X |
| Elkins Residence | 60 West 17 th Avenue | | | X |
| Marx-Schaefer's Residence | 1718 Lincoln Street | | | X |
| Benjamin Franklin Dorris House | 707 East 17 th Avenue | X | | |
| Svarverud House | 1629 Moss Street | | | X |
| Wright House | 1694 Washington Street | | | X |
| McArthur Court | University of Oregon | | | X |
| Peterson Row Houses | 1659-1691 Olive Street | | | X |
| Weinstein Residence | 485 West 17 th Avenue | | | X |
| Mickelson Residence | 1654 Lincoln Street | | | X |
| Himber Residence | 1661 Washington Street | | | X |
| Krey House | 1660 Washington Street | | | X |
| Christian/Patterson Rental | 244 East 16 th Avenue | X | X | |
| Patterson/Stratton Residence | 1605 Pearl Street | X | | |
| Veterans Memorial Building | 1626 Willamette Street | | | X |
| Lane Tower | 1601 Olive Street | | | X |
| Hamaker Residence | 1610 Olive Street | | | X |
| Hayward Field E. Grandstand | University of Oregon | | | X |
| A.V. Peters-Liston-Wintermeire House | 1611 Lincoln Street | X | X | X |
| Barnes Rentals | 1596 Olive Street | | | X |
| White Residence | 1585 Lincoln Street | | | X |
| Education Building 1916 | University of Oregon | | | X |
| Eugene Pioneer Cemetery | 18 th and University - NW corner | X | X | |
| Fairmount Presbyterian Church/ Maude Kerns Art Center | 1910 East 15 th Avenue | | X | X |
| Physical Education Building | University of Oregon | | | X |
| Robinson Residence | 1542 Washington Street | | | X |
| Gerlinger Hall | University of Oregon | X | | X |
| Library/Memorial Quadrangle Ensemble | University of Oregon | X | | X |
| Kappa Alpha Theta Sorority House | 791 East 15 th Avenue | | | X |

| NAME | ADDRESS | NAT REG | CITY LNDMRK | PRIMARY |
|--------------------------------------|--------------------------------------|---------|-------------|---------|
| Psi Alpha Chi Omega Sorority | 1461 Alder Street | X | | |
| Coombs-Davis House | 1464 Lincoln Street | | | X |
| Luckey-Gardner Residence | 1475 Washington Street | | | X |
| Lyons Residence | 1466 Washington Street | | | X |
| Susan Campbell Hall | University of Oregon | X | | X |
| Hendricks Hall | University of Oregon | X | | X |
| Craftsman Club | 850 East 14 th Avenue | | | X |
| Sigma Alpha Epsilon Fraternity House | 812 East 14 th Avenue | | | X |
| Erdman House | 1421 Lawrence Street | | | X |
| Parsons Residence | 1418 Olive Street | | | X |
| Museum of Art | University of Oregon | X | X | X |
| Souls-Westfall Duplex | 1412 Pearl Street | | X | X |
| Bion Drake Rental | 1396 Charnelton Street | | | X |
| Collier House | University of Oregon | | X | |
| Johnson Hall | University of Oregon | X | X | |
| Robert A. Booth House | 1361 Pearl Street | | | X |
| Phi Delta Theta Fraternity House | 1332 Kincaid Street | | | X |
| Chapman Hall | University of Oregon | | | X |
| Condon Hall | University of Oregon | | | X |
| Cook Residence | 1338 Charnelton Street | | | X |
| Lane County Clerk's Building | 740 West 13 th Avenue | X | X | X |
| Thomas-Roach Building | 544-550 East 13 th Avenue | | X | |
| First Congregational Church | 492 East 13 th Avenue | X | X | X |
| Larson Residence | 1331 Washington Street | | | X |
| Fred Rice House | 336 East 13 th Avenue | | | X |
| Wm. T. Carrol House | 236 East 13 th Avenue | | | X |
| Ball House Ensemble | 1312/1330/1338 Lincoln Street | | X | X |
| Commerce Hall | University of Oregon | | | X |
| Skinner Residence | 590 West 13 th Avenue | | X | X |
| G.W. Hunter Residence | 1308 Jefferson Street | | | X |
| Wetherbee/Winnard House | 1280 Mill Street | | X | X |
| Kennell Ellis Building | 1280 Willamette Street | | X | X |
| Francis Berrian/Dunn House | 149 East 13 th Avenue | | | X |
| Ralph Newman Residence | 227 West 15 th Avenue | | | X |
| Humphries Motors Building | 1290 Oak Street | | | X |
| Wilder House | 259 East 13 th Avenue | | | X |
| McDermott House | 1264 Pearl Street | | | X |
| Peterson Apartments | 1281 Oak Street | | | X |
| Florence Apartments | 1272 Willamette Street | | | X |
| McNail-Riley House | 601 West 13 th Avenue | | | X |
| Howard Hall House | 1991 Garden Avenue | X | | X |
| Dunn Family House | 1230 Oak Street | | | |
| C. S. Williams House | 1973 Garden Avenue | X | | X |
| Deady Hall | University of Oregon | X | X | |
| George B. Dorris House | 446 East 12 th Avenue | | | |
| Christian House | 170 East 12 th Avenue | | X | X |
| Oscar A. Faust House | 158 East 12 th Avenue | | | X |
| Edward L. Zimmerman House | 146 East 12 th Avenue | | X | X |
| Johnson House | 1240 Monroe Street | | | X |
| C. C. Meyers House | 276 West 12 th Avenue | | | X |

| NAME | ADDRESS | NAT REG | CITY LNDMRK | PRIMARY |
|---------------------------------|--------------------------------------|---------|-------------|---------|
| Schwering House | 511 East 12 th Avenue | | X | X |
| Lincoln School | 650 West 12 th Avenue | X | | |
| Beta Theta Pi House | 379-381 East 12 th Avenue | X | | |
| Arthur A./Ella Maring House | 990 West 12 th Avenue | | | X |
| Villard Hall | University of Oregon | X | X | X |
| Widmer/Pedron House | 1190 Washington | | | |
| Maude Kerns House | 1125 Hilyard Street | | | X |
| Alpha Tau Omega House | 1143 Oak Street | X | | X |
| Wilkinson-Sellon House | 351 West 12 th Avenue | | | X |
| Sloat-Clow House | 367 West 12 th Avenue | | | X |
| First Christian Church | 1166 Oak Street | | | X |
| The Millrace | 1000x Alder Street | | | X |
| Eugene Divinity School | 828 East 11 th Avenue | | | X |
| Hull House Apartments | 790 East 11 th Avenue | | | X |
| Calkins House | 588 East 11 th Avenue | X | X | X |
| Holcomb House | 835 West 12 th Avenue | | | X |
| Fuller-Slattery House | 322 East 11 th Avenue | | | X |
| Friendly Residence | 280 East 11 th Avenue | | | X |
| Stanwood Building | 50 East 11 th Avenue | | | X |
| Bristow Residence | 272 West 11 th Avenue | | | X |
| Sigma Nu Fraternity House | 763 East 11 th Avenue | | | X |
| Edith Chambers House | 1059 Hilyard Street | | | X |
| Alpha Phi Sorority House | 1050 Hilyard Street | X | | X |
| St. Mary's Catholic Church | 1062 Charnelton Street | | | X |
| Firestone Building | 185 East 11 th Avenue | X | | X |
| Chi Psi Fraternity House | 1018 Hilyard Street | X | | |
| Gamma Phi Beta Sorority House | 1021 Hilyard Street | X | | |
| Upper Millrace | 1800x Garden Avenue | | | |
| Schaefer's Building | 1001 Willamette Street | X | X | X |
| McDonald Theater | 1004 Willamette Street | X | X | X |
| Cross-Currin House | 358 West 10 th Avenue | | | X |
| Lord House | 372 West 10 th Avenue | | | X |
| Howe-Smeed House | 388 West 10 th Avenue | | | X |
| Haynes House | 728 West 10 th Avenue | | | X |
| Talbott House | 1026 Jackson | | | X |
| The Millrace | 1000x Alder Street | | | X |
| Ax Billy Dept. Store | 973 Willamette Street | X | X | X |
| Ranch House | 1390 West 10 th Avenue | | | X |
| Chambers House | 1006 Taylor Street | X | X | X |
| Dorris Apartments | 963 Ferry Lane | X | | |
| Eugene Hotel Annex | 933 Pearl Street | X | | |
| Manson House | 931 West 10 th Avenue | | | X |
| Gertrude & Ludwig Kaufman House | 996 Jefferson Street | | X | X |
| Beardsley House | 673 West 10 th Avenue | | | X |
| Hoffman House | 942 Lawrence | | | X |
| Eugene Hotel | 222 East Broadway | X | X | X |
| Quackenbush Hardware | 160 East Broadway | X | X | X |
| Miner Building | 132 East Broadway | | | X |
| Stanley Building | 94 West Broadway | | | X |
| Gilbertson House | 342 West Broadway | | | X |

| NAME | ADDRESS | NAT REG | CITY LNDMRK | PRIMARY |
|--|-------------------------------------|---------|-------------|---------|
| Luckeys Clock | 30 East Broadway | | | X |
| Scobert House | 670 West Broadway | | | X |
| Paris House | 732 West Broadway | | | X |
| First Baptist Church | 868 High Street | | | X |
| Eugene Cleaners | 245 East Broadway | | | X |
| Eli Bangs House | 855 High Street | | | X |
| Hon. Joshua J. Walton House | 433 East Broadway | | | X |
| W.H. Abrahms Cider Factory | 620 1/2 East 8 th Avenue | | | X |
| Hodes Grouping | 857 Lawrence Street | | | X |
| Stickles/Schaefers House | 531 West Broadway | | X | X |
| Hampton Apartments | 856 Lincoln Street | | | |
| Bristow House | 856 1/2 Lincoln Street | | | X |
| J.H. McDonald House | 669 West Broadway | | | X |
| Wesley B. Pennington House | 837 Lincoln Street | | | X |
| Halvor P. Garberg House | 620 East 8 th Avenue | | | X |
| Haynes House | 953 West Broadway | | | X |
| Gross Brothers Foundry | 518 East 8 th Avenue | | | X |
| Courthouse Sq/Hitching Post | 800 Oak Street | | | X |
| Courthouse Sq/Hitching Post | 801 Oak Street | | | X |
| Hendricks Rental House | 812-814 Lawrence | | | X |
| Agripac Office | 799A Ferry Street | | | X |
| Frank L. Gross House | 313 East 8 th Avenue | | | X |
| McMorran & Washburne Store | 795 Willamette Street | X | X | X |
| Yoran Apartments | 355 West 8 th Avenue | | | X |
| James Offutt House | 780 Washington Street | | | X |
| Woodmen of the World Hall | 291 West 8 th Avenue | X | X | X |
| Smeede Hotel | 767 Willamette Street | X | X | X |
| Baldwin Market | 765-781 Monroe Street | X | X | X |
| R.E. Buck Plumbing & Heating | 771 Blair Boulevard | | | |
| John Hampton House | 268 West 7 th Avenue | | | X |
| Wheeler House | 700 Lawrence Street | | | X |
| EWEB Standby Electrical Plant | 500 East 4 th Avenue | | | X |
| Humphrey Apartments | 664 Lincoln Street | | | X |
| Wald/Woodruff House | 642 Charnelton Street | | | X |
| The Cartmell House | 655 Monroe Street | | | X |
| Jorgenson House | 931 West 7 th Avenue | | | X |
| Leonard Gross House | 630 Charnelton Street | | | X |
| Chess/Large Grouping | 618 Lincoln Street | | | X |
| Skinner-Packard House | 260 West 6 th Avenue | | | X |
| Working Flats | 614 Lawrence Street | X | X | X |
| W.W. Brown House | 564 Lincoln Street | | | X |
| Lane County Farmers Union Cooperative Building | 532 Olive Street | X | | X |
| Booth-Kelly Building | 507 Willamette Street | | X | X |
| U.S. Post Office | 520 Willamette Street | X | X | X |
| Pacific Cooperative Poultry Producers | 182 West 5 th Avenue | X | X | X |
| Adeline Church House | 511 Lawrence Street | | | X |
| Granary Building | 259 East 5 th Avenue | | | X |
| Allen & Lewis Wholesale Grocer | 207 East 5 th Avenue | | | X |
| Palace Hotel | 488 Willamette Street | X | X | X |

| NAME | ADDRESS | NAT REG | CITY LNDMRK | PRIMARY |
|----------------------------------|---------------------------------------|---------|-------------|---------|
| Oregon Electric Railway Station | 27 East 5 th Avenue | X | X | X |
| Depot Restaurant | 453 Willamette Street | | | X |
| Hooker/Reid House | 641 West 5 th Avenue | | | X |
| C.W. Powell House | 1125 West 5 th Avenue | X | X | X |
| Southern Pacific Depot | 449 Willamette Street | | X | X |
| Gibson House | 1001 West 5 th Avenue | X | X | X |
| Eakins/Snodgrass House | 437 Lawrence Street | | X | |
| Burttons Saw Factory Cottages | 451/461/471 Blair Boulevard | X | X | X |
| Koepp Family House | 458 Blair Boulevard | X | X | |
| Vernacular Residence | 444 Blair Boulevard | X | | |
| Southern Pacific Depot | 443 Willamette Street | | X | |
| Otto and Otelia Koppe House | 1225 West 5 th Avenue | | | X |
| Jerry and Melissa Horn House | 425 Lawrence Street | | | X |
| Burton's Saw Factory | 449 Blair Boulevard | X | X | X |
| Vernacular Residence | 444 Blair Boulevard | X | X | |
| Scobert House | 440 Blair Boulevard | X | X | |
| Cash O. Smith House | 1022 West 4 th Avenue | X | X | X |
| NEDCO parking lot | Parking lot on 4 th Avenue | X | X | |
| Sam Bonds Garage | 407 Blair Boulevard | X | X | |
| Original Tiny Tavern | 400 Blair Boulevard | X | X | |
| English Cottage Revival Res. | 1100 West 4 th Avenue | X | X | X |
| Peoples Market | 339-343 High Street | X | X | |
| Ham House | 347 E 3 rd Alley | X | | X |
| Mims House II | 336 High Street | X | X | X |
| Mims House | 330 High Street | X | X | X |
| McCracken Brothers Motor Freight | 375 W 4 th Avenue | | | |
| Jefferson D. Spencer House | 394 Blair Boulevard | X | X | |
| Dixon Daughters House | 320 High Street | X | X | X |
| Commercial | 315 High Street | X | X | X |
| Hurschel Smith House | 306 High Street | X | X | |
| Bungalow | 258 East 3 rd Avenue | X | X | |
| Cogswell-Miller House | 246 East 3 rd Avenue | X | X | |
| Parking | Vacant | X | X | |
| Hayes Blacksmith Shop | 357 Van Buren Street | X | X | |
| Apartment | 210 East 3 rd Avenue | X | X | X |
| Earl Peterson House | 358 Blair Boulevard | X | X | |
| New Day Bakery | 345 Van Buren Street | X | X | |
| JESCO Club | 340 Blair Boulevard | X | X | |
| Ben Whites Vulcanizing | 341 Van Buren Street | X | X | |
| Shelton-McMurphey House | 303 Willamette Street | X | X | |
| E and N Chase House | 298 Pearl Street | X | X | X |
| Wylie House | 313 South Garden Way | | | X |
| Apartments | 314 Blair Boulevard | X | X | X |
| Old Texas Steak House | 325 Blair Boulevard | X | X | |
| McAlister House | 286 High Street | X | X | |
| Bungalow | 284 Pearl Street | X | X | X |
| C.O. and F. A. Stratton House | 1080 West 3 rd Avenue | X | X | |
| Henzler House and Shop | 1110 West 3 rd Avenue | X | X | X |
| Pacific Co-op Poultry | 315 Madison Street | | | |
| Pironi House | 235 East 3 rd Avenue | X | X | X |

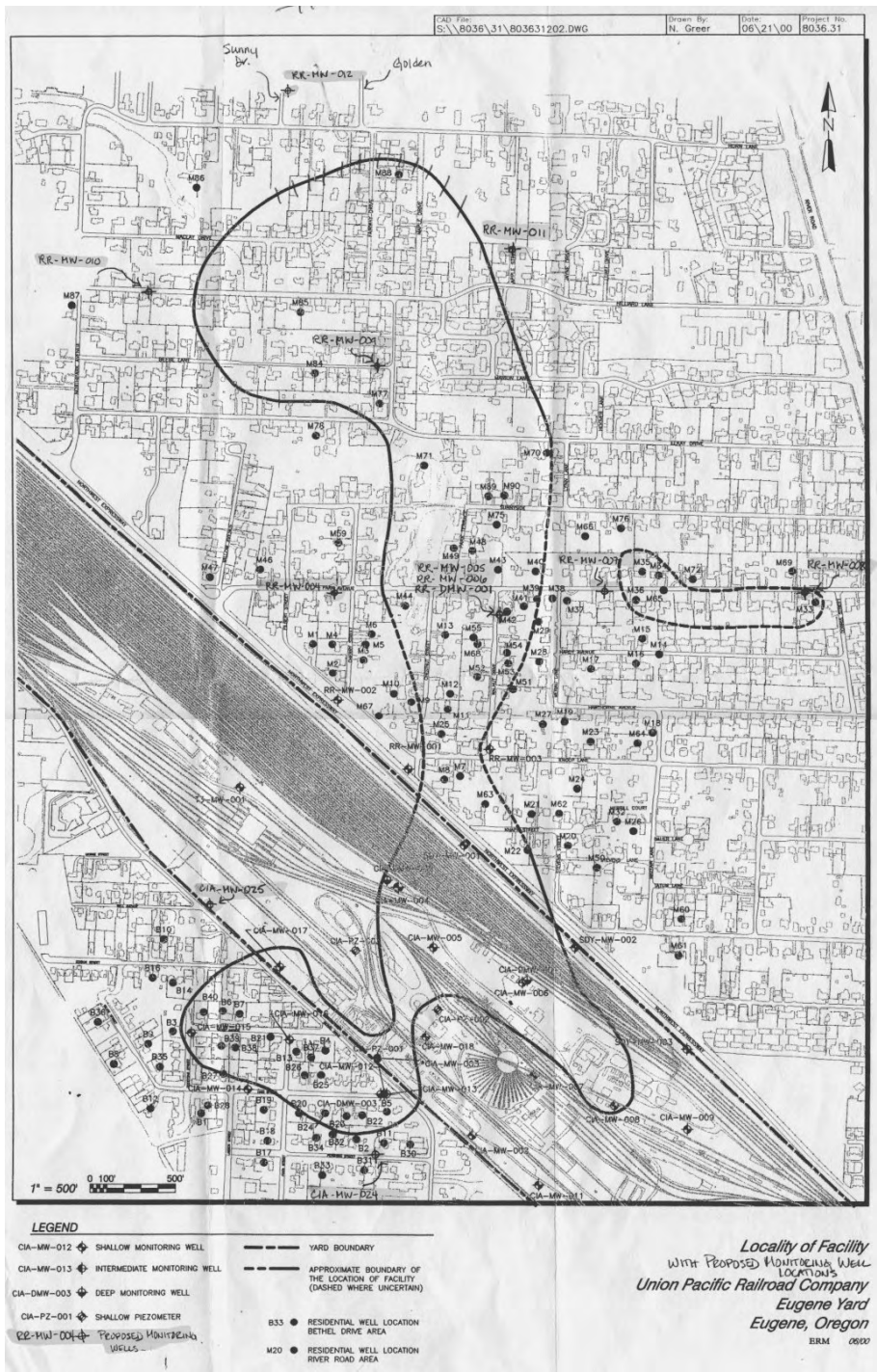
| NAME | ADDRESS | NAT REG | CITY LNDMRK | PRIMARY |
|-------------------------------|---|---------|-------------|---------|
| Surata Soy Foods | 302 Blair Boulevard | X | X | |
| Campbell Property/Cottage | 252 Pearl Street | X | | |
| Campbell Property/Cottage | 252 Pearl Street | X | | |
| Henderson House | 260 High Street | X | X | |
| Paul and Grace Koppe House | 221A East 3 rd Avenue | X | X | X |
| Koppe House | 205-211 East 3 rd Avenue | X | X | X |
| Campbell House | 252 Pearl Street | X | X | X |
| Frank Chase House | 274 South Garden Way | X | | |
| Queen Anne Victorian | 240-242 High Street | X | X | X |
| Wheeler House | 245A Pearl Street | X | X | |
| Eugene Planing Mill | 405 West 3 rd Avenue | | | X |
| The Carmichael House | 969 West 3 rd Avenue | | | X |
| Hanson House | 212 High Street | X | X | X |
| Apartment | 260 East 2 nd Avenue | X | X | X |
| Colonial Bungalow | 240 East 2 nd Avenue | X | X | |
| Colonial Bungalow | 224 East 2 nd Avenue | X | X | |
| Colonial Bungalow | 208 East 2 nd Avenue | X | X | |
| Gladys Chase House | 242 South Garden Way | X | | |
| Ankeny House | 212 Pearl Street | X | X | X |
| Victorian Cottage | 188 High Street | X | X | |
| Skinners Cabin Marker | South side of 2 nd Avenue West of Lincoln Street | | | |
| Colonial Bungalow | 259 East 2 nd Avenue | X | X | X |
| The Big O | Skinner Butte Park | | | |
| Skinner Butte Reservoir | Skinner Butte Park | | | X |
| Skinners Cabin Marker | Lincoln Street | | | X |
| Apartment | 235 East 2 nd Avenue | X | | X |
| Apartments | 215 East 2 nd Avenue | X | | |
| Structure | 205 East 2 nd Avenue | X | X | |
| The Big E | Skinner Butte Park | | | |
| vacant | Vacant | | X | X |
| Harry Chase House | 158 South Garden Way | X | | |
| Apartments | 106-140 High Street | | X | |
| Apartments | 200 Cheshire Street | | X | |
| Associated Oil Co. | 1153 West 2 nd Avenue | X | | |
| Brenaman House | 132 South Garden Way | X | | |
| Basalt Quarry | Skinner Butte Park | | | |
| vacant | Vacant | | X | X |
| Jack Chase House | 110 South Garden Way | X | | |
| Charles and Eva Barhite House | 12 North Jefferson Street | | | X |
| Basalt Wall | Skinner Butte Park | | | X |
| Dimond/Snellstrom House | 37 North Madison Street | | | X |
| W and L Hyland House | 920 Cheshire Avenue | | | X |
| A and F Hyland House | 960 Cheshire Avenue | | | X |
| PENGRA HOUSE | 150 North Garden Way | | X | X |
| Wilbur Hyland Sr. House | 250 North Adams | | | |
| Ross/Gillespie House | 277 North Grand | | | X |
| Black Tartarian Cherry Tree | Owen Rose Garden | | | X |
| Johansen-Moody House | 370 River Road | | | X |
| Lombard Potter House | 405 River Road | | X | |

| NAME | ADDRESS | NAT REG | CITY LNDRK | PRIMARY |
|--------------------|-----------------------|----------------|-----------------------|----------------|
| ELGAARD HOUSE | 390 River Road | | X | |
| Harlow House | 2991 Harlow Road | X | X | |
| Cal Young House | 1610 Cal Young Road | | X | |
| Willakenzie Grange | 3057 Willakenzie Road | | X | |
| Jamieson House | 3650 River Road | | X | |

Source: City of Eugene -- X:\data\parcel\eug\histsite1

10. Environmental Cleanup Sites

Site 312 (Eugene) refers to the Union Pacific Railroad – Eugene Yards. A ground water contamination plume has been mapped in this area. This map was downloaded from Oregon Toxics Alliance web site: http://www.oregontoxics.org/railyard/rr_home.html, and is attributed on that site to ERM, UPRR's environmental consultant firm.



11. Toxic Release Inventory Permitted Sites – Chemicals

TRI On-site and Off-site Reported Disposed of or Otherwise Released, for facilities in All Industries, for All Chemicals, Lane County, Oregon, 2005. (Note: Three of the listed facilities are outside of the Central Lane MPO Boundary.)

| | | |
|----|--|--|
| 1 | BULK HANDLING SYSTEMS INC TOLUENE | TOLUENE |
| 2 | CASCADE PLATING & MACHINE LEAD COMPOUNDS | XYLENE (MIXED ISOMERS) |
| 3 | COUNTRY COACH INC. (Junction City—not in MPO) | 17 MONACO COACH CORP SPRINGFIELD STYRENE |
| 4 | DYNEA USA INC AMMONIA ETHYLENE GLYCOL FORMALDEHYDE METHANOL PHENOL | 18 MURPHY PLYWOOD CO EUGENE OPERATIONS AMMONIA FORMALDEHYDE METHANOL |
| 5 | FORBO ADHESIVES LLC NITRATE COMPOUNDS | 19 OREGON RUBBER CO ZINC COMPOUNDS |
| 6 | GEORGIA PACIFIC RESINS INC EUGENE RESINS PLANT AMMONIA EPICHLOROHYDRIN FORMALDEHYDE FORMIC ACID METHANOL PHENOL | 20 PETERSON PACIFIC CORP CHROMIUM COPPER MANGANESE NICKEL |
| 7 | GHEEN IRRIGATION WORKS INC LEAD ZINC COMPOUNDS | 21 PIERCE FITTINGS ZINC COMPOUNDS |
| 8 | HEXION SPECIALTY CHEMICALS INC SPRINGFIELD AMMONIA DIETHANOLAMINE EPICHLOROHYDRIN ETHYLENE GLYCOL FORMALDEHYDE FORMIC ACID METHANOL PHENOL TRIETHYLAMINE | 22 PSC SCANNING INC LEAD COMPOUNDS |
| 9 | HYNIX SEMICONDUCTOR MANUFACTURING AMERICA INC. AMMONIA CATECHOL HYDROGEN FLUORIDE NITRATE COMPOUNDS NITRIC ACID | 23 ROSBORO - VAUGHN LEAD COMPOUNDS PHENOL |
| 10 | J. H. BAXTER & CO. AMMONIA COPPER COMPOUNDS CREOSOTE DIOXIN AND DIOXIN-LIKE COMPOUNDS HEXACHLOROBENZENE PENTACHLOROPHENOL POLYCYCLIC AROMATIC COMPOUNDS | 24 ROSBORO LLC SPRINGFIELD FACILITY PHENOL |
| 11 | JASPER WOOD PRODUCTS (Jasper-not in MPO) | 25 SAFETY-KLEEN SYSTEMS (705401) ETHYLENE GLYCOL |
| 12 | JOHNSON CRUSHERS INTERNATIONAL INC XYLENE (MIXED ISOMERS) | 26 SCIENTIFIC DEVELOPMENTS INC DIISOCYANATES ZINC COMPOUNDS |
| 13 | KINGSFORD MANUFACTURING CO LEAD COMPOUNDS METHANOL NITRATE COMPOUNDS | 27 SIERRAPINE LTD SPRINGFIELD DIV FORMALDEHYDE METHANOL |
| 14 | MCFARLAND CASCADE POLE & LUMBER CO DIOXIN AND DIOXIN-LIKE COMPOUNDS HEXACHLOROBENZENE PENTACHLOROPHENOL POLYCYCLIC AROMATIC COMPOUNDS | 28 TRELLEBORG SEALING SOLUTIONS EUGENE STYRENE |
| 15 | MOLECULAR PROBES INC CHLOROFORM METHANOL | 29 TRUS JOIST A WEYERHAEUSER BUS. EUGENE PLANT PHENOL |
| 16 | MONACO COACH COBURG DIISOCYANATES ETHYLBENZENE ETHYLENE GLYCOL METHYL ISOBUTYL KETONE | 30 WESTERN PNEUMATICS INC MANGANESE |
| | | 31 WESTERN STRUCTURES PHENOL |
| | | 32 WEYERHAEUSER CO ACETALDEHYDE AMMONIA BENZO(G,H,I)PERYLENE CATECHOL DIOXIN AND DIOXIN-LIKE COMPOUNDS FORMALDEHYDE HYDROCHLORIC ACID (1995 AND AFTER 'ACID AEROSOLS' ONLY) LEAD COMPOUNDS MANGANESE COMPOUNDS MERCURY COMPOUNDS METHANOL NITRATE COMPOUNDS PHENOL POLYCYCLIC AROMATIC COMPOUNDS SULFURIC ACID (1994 AND AFTER 'ACID AEROSOLS' ONLY) |
| | | 33 WEYERHAEUSER CO - EUGENE MDF FORMALDEHYDE METHANOL |
| | | 34 WEYERHAEUSER CO - SPRINGFIELD PLYWOOD LEAD COMPOUNDS |
| | | 35 WEYERHAEUSER COBURG SAWMILL & VENEER (not in MPO) |
| | | 36 WILLAMETTE VALLEY CO DIISOCYANATES |

18. Federal and State T&E Species, Sensitive Species and Species of Concern

**FEDERALLY LISTED THREATENED, ENDANGERED,
CANDIDATE SPECIES AND SPECIES OF CONCERN
WHICH MAY OCCUR WITHIN OR NEAR CENTRAL LANE MPO BOUNDARY**

| LISTED SPECIES – COMMON NAME | SCIENTIFIC NAME | STATUS |
|---|---|--------|
| <u>Threatened & Endangered</u>¹ | | |
| Bald eagle ⁵ | <i>Haliaeetus leucocephalus</i> | ‡ |
| Northern spotted owl | <i>Strix occidentalis caurina</i> | CH T |
| Steelhead (Upper Willamette River) ⁸ | <i>Oncorhynchus mykiss</i> ssp. | T* |
| Chinook salmon (Upper Willamette River) ⁹ | <i>Oncorhynchus tshawytscha</i> | T* |
| Oregon chub | <i>Oregonichthys crameri</i> | E |
| Bull trout (Columbia River Basin) ¹⁰ | <i>Salvelinus confluentus</i> | CH T |
| Fender's blue butterfly ¹¹ | <i>Icaricia icarioides fenderi</i> | E |
| Golden Indian paintbrush ¹² | <i>Castilleja levisecta</i> | T |
| Willamette daisy ¹³ | <i>Erigeron decumbens</i> var. <i>decumbens</i> | E |
| Howellia | <i>Howellia aquatilis</i> | T |
| Bradshaw's lomatium | <i>Lomatium bradshawii</i> | E |
| Kincaid's lupine ¹⁴ | <i>Lupinus sulphureus</i> var. <i>kincaidii</i> | T |
| <u>Candidate Species</u>¹⁵ | | |
| Yellow-billed cuckoo | <i>Coccyzus americanus</i> | CS |
| Streaked horned lark | <i>Eremophila alpestris strigata</i> | CS |
| Oregon spotted frog | <i>Rana pretiosa</i> | CS |
| Taylor's checkerspot | <i>Euphydryas editha taylori</i> | CS |
| Pallid bat (west of Cascade crest) | <i>Antrozous pallidus pacificus</i> | SOC |
| White-footed vole | <i>Arborimus albipes</i> | SOC |
| Red tree vole | <i>Arborimus longicaudus</i> | SOC |
| Pacific western big-eared bat | <i>Corynorhinus townsendii townsendii</i> | SOC |
| Silver-haired bat | <i>Lasionycteris noctivagans</i> | SOC |
| Long-eared myotis (bat) | <i>Myotis evotis</i> | SOC |

| LISTED SPECIES – COMMON NAME | SCIENTIFIC NAME | STATUS |
|--|--|---------------|
| Fringed myotis (bat) | <i>Myotis thysanodes</i> | SOC |
| Long-legged myotis (bat) | <i>Myotis volans</i> | SOC |
| Yuma myotis (bat) | <i>Myotis yumanensis</i> | SOC |
| Camas pocket gopher | <i>Thomomys bulbivorus</i> | SOC |
| Northern goshawk | <i>Accipiter gentilis</i> | SOC |
| Black tern | <i>Chlidonias niger</i> | SOC |
| Band-tailed pigeon | <i>Columba fasciata</i> | SOC |
| Olive-sided flycatcher | <i>Contopus cooperi</i> | SOC |
| Harlequin duck | <i>Histrionicus histrionicus</i> | SOC |
| Yellow-breasted chat | <i>Icteria virens</i> | SOC |
| Acorn woodpecker | <i>Melanerpes formicivorus</i> | SOC |
| Lewis' woodpecker | <i>Melanerpes lewis</i> | SOC |
| Mountain quail | <i>Oreortyx pictus</i> | SOC |
| Oregon vesper sparrow | <i>Pooecetes gramineus affinis</i> | SOC |
| Purple martin | <i>Progne subis</i> | SOC |
| Tailed frog | <i>Ascaphus truei</i> | SOC |
| Oregon slender salamander | <i>Batrachoseps wrighti</i> | SOC |
| Northwestern pond turtle | <i>Emys marmorata marmorata</i> | SOC |
| Northern red-legged frog | <i>Rana aurora aurora</i> | SOC |
| Foothill yellow-legged frog | <i>Rana boylei</i> | SOC |
| Cascades frog | <i>Rana cascadae</i> | SOC |
| Southern torrent (seep) salamander | <i>Rhyacotriton variegatus</i> | SOC |
| Green sturgeon | <i>Acipenser medirostris</i> | SOC |
| River lamprey | <i>Lampetra ayresi</i> | SOC |
| Pacific lamprey | <i>Lampetra tridentata</i> | SOC |
| Coastal cutthroat trout (Upper Willamette) | <i>Oncorhynchus clarki clarki</i> | SOC |
| Steelhead (Oregon Coast) | <i>Oncorhynchus mykiss</i> ssp. * | SOC |
| Tombstone Prairie farulan caddisfly | <i>Farula reapi</i> | SOC |
| Oregon giant earthworm | <i>Megascolides (=Driloleirus) macelfreshi</i> | SOC |

| LISTED SPECIES – COMMON NAME | SCIENTIFIC NAME | STATUS |
|--|---|--------|
| caddisfly (no common name) | <i>Moselyana comosa</i> | SOC |
| caddisfly (no common name) | <i>Namamyia plutonis</i> | SOC |
| Tombstone Prairie oligophlebodes caddisfly | <i>Oligophlebodes mostbento</i> | SOC |
| Insular blue (butterfly) | <i>Plebejus saepiolus insulanus</i> | SOC |
| Caddisfly (no common name) | <i>Rhyacophila chandleri</i> | SOC |
| One-spot rhyacophilan caddisfly | <i>Rhyacophila unipunctata</i> | SOC |
| Howell's bent grass | <i>Agrostis howellii</i> | SOC |
| White top aster (Curtus) | <i>Aster curtus</i> | SOC |
| Wayside aster | <i>Aster vialis</i> | SOC |
| Cold-water corydalis | <i>Corydalis aquae-gelidae</i> | SOC |
| Willamette Valley larkspur | <i>Delphinium oregonum</i> | SOC |
| Peacock larkspur | <i>Delphinium pavonaceum</i> | SOC |
| Seaside gilia | <i>Gilia millefoliata</i> | SOC |
| Shaggy horkelia | <i>Horkelia congesta</i> ssp. <i>congesta</i> | SOC |
| Thin-leaved peavine | <i>Lathyrus holochlorus</i> | SOC |
| Moss | <i>Limbella fryei</i> | SOC |
| Henderson sidalcea | <i>Sidalcea hendersonii</i> | SOC |
| Hitchcock's blue-eyed grass | <i>Sisyrinchium hitchcockii</i> | SOC |

(E) - Listed Endangered

(T) – Listed Threatened

(CH) - Critical Habitat has been designated for this species

CS – Candidate Species

SOC - Species of Concern - Taxa whose conservation status is of concern to the Service, but for which further information is still needed.

* Consultation with NOAA's National Marine Fisheries Service may be required.

¹¹ U.S. Department of Interior, Fish and Wildlife Service, October 31, 2000, *Endangered and Threatened Wildlife and Plants*, 50 CFR 17.11 and 17.12

⁵¹ Delisted announced June 28, 2007; *Federal Register* Vol. 72, No. 130, July 9, 2007, effective August 8, 2007; See *Federal Register* Vol. 60, No. 133, July 12, 1995, - Final Rule - Bald Eagle.

⁷¹ *Federal Register* Vol. 57, No. 10, January 15, 1992, Final Rule - Critical Habitat for the Northern Spotted Owl

⁸¹ *Federal Register* Vol. 64, No. 57, March 25, 1999, Final Rule - Middle Columbia and Upper Willamette River Steelhead

⁹¹ *Federal Register* Vol. 64, No. 56, March 24, 1999, Final Rule - West Coast Chinook Salmon

¹⁰¹ *Federal Register* Vol. 63, No. 111, June 10, 1998, Final Rule - Columbia River and Klamath River Bull Trout

¹¹¹ *Federal Register* Vol. 65, No. 16, January 25, 2000, Final Rule - *Erigeron decumbens* var. *decumbens*, *Lupinus sulphureus* ssp. *kincaidii*, and Fender's blue butterfly

¹²¹ *Federal Register* Vol. 62, No. 112, June 11, 1997, Final Rule - *Castilleja levisecta*

¹³¹ *Federal Register* Vol. 65, No. 16, January 25, 2000, Final Rule - *Erigeron decumbens* var. *decumbens*, *Lupinus sulphureus* ssp. *kincaidii*, and Fender's blue butterfly

^{14/} *Federal Register Vol. 65, No. 16, January 25, 2000, Final Rule - Erigeron decumbens var. decumbens, Lupinus sulphureus ssp. kincaidii, and Fender's blue butterfly*

^{15/} *Federal Register Vol. 69, No. 86, May 4, 2004, Notice of Review - Candidate or Proposed Animals and Plants*

Source: http://ecos.fws.gov/tess_public/SpeciesRecovery.do?sort=1

**OREGON DEPARTMENT OF FISH AND WILDLIFE SENSITIVE SPECIES
WHICH MAY OCCUR WITHIN OR NEAR CENTRAL LANE MPO BOUNDARY**

| COMMON NAME | SCIENTIFIC NAME | STATUS |
|---|--------------------------------------|---------------|
| Bald eagle | <i>Haliaeetus leucocephalus</i> | T |
| Northern spotted owl | <i>Strix occidentalis caurina</i> | CH T |
| American Peregrine Falcon | <i>Falco peregrinus anatum</i> | E |
| Oregon Chub | <i>Oregonichthys crameri</i> | SC |
| Coastal Steelhead (Upper Willamette Basin) | <i>Oncorhynchus mykiss ssp</i> | SC |
| Bull Trout | <i>Salvelinus confluentus</i> | SC |
| Oregon spotted frog | <i>Rana pretiosa</i> | SC |
| Northern Leopard Frog | <i>Rana pipiens</i> | SC |
| Western Pond Turtle | <i>Clemmys marmorata</i> | SC |
| Painted Turtle | <i>Chrysemys picta</i> | SC |
| Red-necked Grebe | <i>Podiceps grisegna</i> | SC |
| Northern Goshawk | <i>Accipiter gentilis</i> | SC |
| Ferruginous Hawk | <i>Buteo regalis</i> | SC |
| Yellow Rail | <i>Coturnicops noveboracensis</i> | SC |
| Upland Sandpiper | <i>Bartramia longicauda</i> | SC |
| Yellow-billed Cuckoo | <i>Coccyzus americanus</i> | SC |
| Burrowing Owl (Willamette Valley) | <i>Speotyto cunicularia</i> | SC |
| Common Nighthawk (Willamette Valley) | <i>Chordeiles minor</i> | SC |
| Lewis' Woodpecker (Willamette Valley) | <i>Melanerpes lewis</i> | SCS |
| Black-backed Woodpecker | <i>Picoides arcticus</i> | SC |
| Streaked Horned Lark (Willamette Valley) | <i>Eremophila alpestris strigata</i> | SC |
| Purple Martin | <i>Progne subis</i> | SC |
| Yellow-breasted Chat (Willamette Valley) | <i>Icteria virens</i> | SC |
| (Oregon) Vesper Sparrow (Willamette Valley) | <i>Poocetes gramineus affinis</i> | SC |
| Western Meadowlark (Willamette Valley) | <i>Sturnella neglecta</i> | SC |
| Townsend's Big-eared Bat | <i>Plecotus townsendii</i> | SC |
| Fisher | <i>Martes pennanti</i> | SC |

| COMMON NAME | SCIENTIFIC NAME | STATUS |
|---|----------------------------|--------|
| Pacific Lamprey | <i>Lampetra tridentate</i> | SV |
| Northern Red-legged Frog | <i>Rana aurora</i> | SV |
| Willamette Valley Foothill Yellow-legged Frog | <i>Rana boylei</i> | SV |
| Cascades Frog | <i>Rana cascadae</i> | SV |
| Western Rattlesnake (Willamette Valley) | <i>Crotalus viridis</i> | SV |
| Great Gray Owl | <i>Strix nebulosa</i> | SV |
| Pileated Woodpecker | <i>Dryocopus pileatus</i> | SV |
| Olive-sided Flycatcher | <i>Contopus borealis</i> | SV |
| Willow Flycatcher (Willamette Valley) | <i>Empidonax brewsteri</i> | SV |
| Western Bluebird (Willamette Valley) | <i>Sialia mexicana</i> | SV |
| Fringed Myotis | <i>Myotis thysanodes</i> | SV |
| Pallid Bat | <i>Antrozous pallidus</i> | SV |

(E) - Listed Endangered

(T) – Listed Threatened

(CH) – Critical Habitat has been designated for this species

SC – Sensitive Species-Critical

SV – Sensitive Species-Vulnerable

Source: Oregon Department of Fish and Wildlife, Wildlife Division:

<http://www.dfw.state.or.us/wildlife/> (5/15/07)

Note that the Environmental Consultation Maps are available at:

http://www.lcog.org/mpo/rtp_environ.html